

## Human IL-30, His Tag, E. coli

<b>Catalog Number</b>	LDG034PHE
<b>Package</b>	5 µg / 20 µg / 100 µg / Customized package

For full product information, images and publications, please visit [our website](#).



### Specifications

#### Species of Origin

Human

#### Affinity Tag

His Tag (C-term)

#### Purity

>98% as determined by SDS-PAGE analysis.

#### Endotoxin level

<0.1 EU per 1 µg of the protein by the LAL method.

#### Expression system

Escherichia coli

#### Buffer

Lyophilized from a 0.2 µm filtered solution of PBS, pH 8.0.

#### Molecular weight

The protein has a calculated MW of 25.47 kDa. The protein migrates as 28 kDa under reducing condition (SDS-PAGE analysis).

#### Form

Lyophilized

### Background

#### Tainan Headquarter

+886-6-2536677

bd@leadgene.com.tw

#### Innovation & Research Center

+886-2-27065528

#### CLD Center

+886-6-2536677

### Background

Interleukin 30 (IL-30) is a 27 kDa cytokine with 216 amino acid residues. IL-30, also known as IL-27A, forms a complex named IL-27 with Ebi3 and is secreted from cells of myeloid origin, such as monocytes, macrophages, and dendritic cells. IL-30 /Ebi3 complex mediates T-cell immunity, promoting Th1 differentiation, inhibiting Th2 differentiation, and inhibiting Th17 differentiation. IL-30 also can be secreted independently of Ebi3 and modulate bacteria-induced oxidative burst and cytokine production.

### Uniprot ID

#Q8NEV9

### Synonyms

IL-27 subunit alpha, IL-27-A, Interleukin-30, p28

### Sequence Note

Phe 29-Pro 243

## Instruction

### Reconstitution

It is recommended to reconstitute the lyophilized protein in sterile H<sub>2</sub>O to a concentration of 200 µg/mL and incubate the stock solution for at least 20 min to ensure sufficient re-dissolved.

### Stability & Storage

This product is stable after storage at:

- -20°C for 12 months in lyophilized state from date of receipt.
- -20°C or -80°C for 1 month under sterile conditions after reconstitution.

Avoid repeated freeze/thaw cycles.

### Shipping

The product is shipped with polar packs. Upon receipt, store it immediately at -20°C or lower for long term storage.

## Image

### Tainan Headquarter

+886-6-2536677

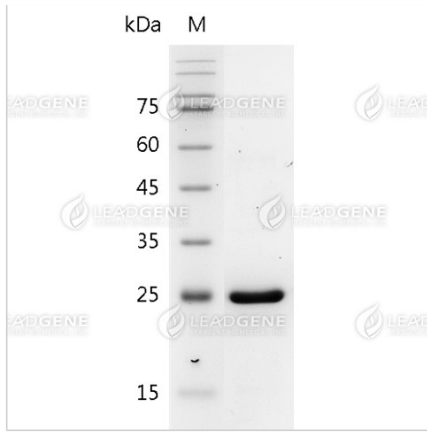
bd@leadgene.com.tw

### Innovation & Research Center

+886-2-27065528

### CLD Center

+886-6-2536677



SDS-PAGE analysis of recombinant human IL-30.

**Disclaimer :** For Research Use or Further Manufacturing Only.