

## Human IL-29, His Tag, E. coli

<b>Catalog Number</b>	LDG033PHE
<b>Package</b>	5 µg / 20 µg / 100 µg / Customized package

For full product information, images and publications, please visit [our website](#).



### Specifications

#### Species of Origin

Human

#### Affinity Tag

His Tag (C-term)

#### Purity

>98% as determined by SDS-PAGE analysis.

#### Activity

Measure by its ability to induce IL-8 secretion in HuH7 cells. The ED<sub>50</sub> for this effect is <6 ng/mL.

#### Form

Lyophilized

#### Expression system

Escherichia coli

#### Buffer

Lyophilized from a 0.2 µm filtered solution of PBS, pH 8.0.

#### Molecular weight

The protein has a calculated MW of 20.70 kDa. The protein migrates as 22 kDa under reducing condition (SDS-PAGE analysis).

#### Endotoxin level

<0.1 EU per 1 µg of the protein by the LAL method.

### Background

#### Tainan Headquarter

+886-6-2536677

bd@leadgene.com.tw

#### Innovation & Research Center

+886-2-27065528

#### CLD Center

+886-6-2536677

### Background

Interleukin 29 (IL-29) is a cytokine, predicts a molecular mass of 21.9 kDa. It belongs to type III interferons group, also termed interferons  $\lambda$  (IFN- $\lambda$ ). Its induction of STAT3-STAT5 has also been displayed, albeit to a lesser degree. The STAT1 /STAT2 signaling cascade transpires as follows: once tyrosine residues on STAT1 and STAT2 are phosphorylated, these proteins dimerize and are subsequently transported to the nucleus.

### Uniprot ID

#Q8IU54

### Synonyms

IFN-lambda-1, Cytokine Zcyto21, Interleukin-29, IL-29

### Sequence Note

Pro23-Thr200

## Instruction

### Reconstitution

It is recommended to reconstitute the lyophilized protein in sterile H<sub>2</sub>O to a concentration of 200  $\mu$ g/mL and incubate the stock solution for at least 20 min to ensure sufficient re-dissolved.

### Stability & Storage

This product is stable after storage at:

- -20°C for 12 months in lyophilized state from date of receipt.
- -20°C or -80°C for 1 month under sterile conditions after reconstitution.

Avoid repeated freeze/thaw cycles.

### Shipping

The product is shipped with polar packs. Upon receipt, store it immediately at -20°C or lower for long term storage.

## Image

### Tainan Headquarter

+886-6-2536677

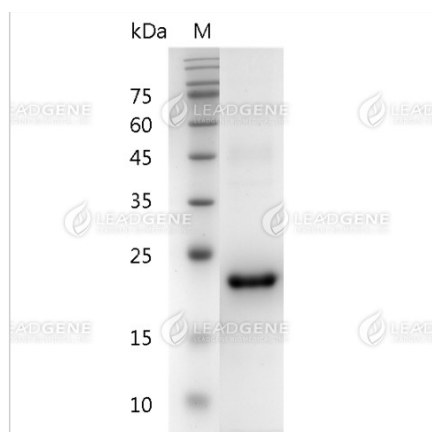
✉ [bd@leadgene.com.tw](mailto:bd@leadgene.com.tw)

### Innovation & Research Center

+886-2-27065528

### CLD Center

+886-6-2536677



SDS-PAGE analysis of recombinant human IL-29.

**Disclaimer :** For Research Use or Further Manufacturing Only.