

## PRRSV Nucleocapsid Protein, His Tag, E. coli

<b>Catalog Number</b>	LDG031PVE
<b>Package</b>	100 µg / Customized package

For full product information, images and publications, please visit [our website](#).



### Specifications

#### Species of Origin

Porcine Reproductive and Respiratory Syndrome Virus (PRRSV)

#### Expression system

Escherichia coli

#### Affinity Tag

His Tag (N-term)

#### Buffer

Lyophilized from a 0.2 µm filtered solution of PBS, pH 7.4.

#### Purity

>90% as determined by SDS-PAGE analysis.

#### Molecular weight

The protein has a calculated MW of 14.61 kDa. The protein migrates as 11-14 kDa under reducing condition (SDS-PAGE analysis).

#### Endotoxin level

<1 EU per 1 µg of the protein by the LAL method.

#### Form

Lyophilized

### Background

#### Background

The PRRS virus (PRRSV) is an enveloped, single-stranded positive-sense RNA virus, responsible for porcine reproductive and respiratory syndrome (PRRS). The nucleocapsid (N) protein of PRRSV has a vital role in suppressing host innate immunity during PRRSV infection.

#### Synonyms

Nucleoprotein, Protein N

**Uniprot ID**

Q04558

**Sequence Note**

Met1 - Ser128

**Instruction**
**Reconstitution**

It is recommended to reconstitute the lyophilized protein in sterile H<sub>2</sub>O to a concentration not less than 200 µg/mL and incubate the stock solution for at least 20 min to ensure sufficient re-dissolved.

**Stability & Storage**

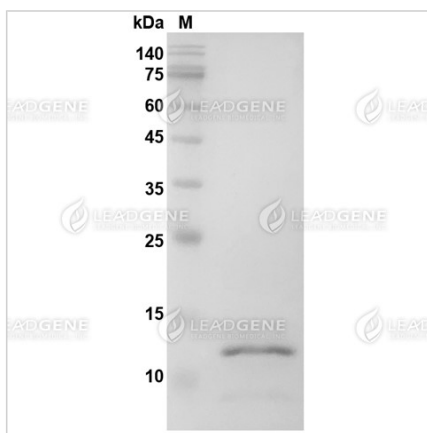
This product is stable after storage at:

- -20°C for 12 months in lyophilized state from date of receipt.
- -20°C or -80°C for 1 month under sterile conditions after reconstitution.

Avoid repeated freeze/thaw cycles.

**Shipping**

The product is shipped with polar packs. Upon receipt, store it immediately at -20°C or lower for long term storage.

**Image**


SDS-PAGE analysis of PRRSV nucleocapsid protein.

**Disclaimer** : For Research Use or Further Manufacturing Only.

**Tainan Headquarter**

+886-6-2536677

bd@leadgene.com.tw

**Innovation & Research Center**

+886-2-27065528

**CLD Center**

+886-6-2536677

**Tainan Headquarter**

+886-6-2536677

bd@leadgene.com.tw

**Innovation & Research Center**

+886-2-27065528

**CLD Center**

+886-6-2536677