

## Human IL-27 (EBI3), His Tag, E. coli

<b>Catalog Number</b>	LDG031PHE
<b>Package</b>	5 µg / 20 µg / 100 µg / Customized package

For full product information, images and publications, please visit [our website](#).



### Specifications

#### Species of Origin

Human

#### Affinity Tag

His Tag (C-term)

#### Purity

>95% as determined by SDS-PAGE analysis.

#### Activity

Measure by its ability to induce TF-1 cells proliferation using a concentration range of 20-200 ng/mL.

#### Form

Lyophilized

#### Expression system

Escherichia coli

#### Buffer

Lyophilized from a 0.2 µm filtered solution of PBS, pH 8.0.

#### Molecular weight

The protein has a calculated MW of 24.25 kDa. The protein migrates as 25 kDa under reducing condition (SDS-PAGE analysis).

#### Endotoxin level

<0.1 EU per 1 µg of the protein by the LAL method.

### Background

#### Tainan Headquarter

+886-6-2536677

bd@leadgene.com.tw

#### Innovation & Research Center

+886-2-27065528

#### CLD Center

+886-6-2536677

### Background

Interleukin 27 EBI3 (IL-27 EI3) predicts a molecular mass of 23.4 kDa. IL-27 is a heterodimeric cytokine that is encoded by Epstein-Barr virus-induced gene 3 (EBI3) and IL-27p28. It is expressed by antigen presenting cells and interacts with a specific cell-surface receptor complex known as IL-27 receptor (IL-27R).

### Uniprot ID

#Q14213

### Synonyms

IL-27 subunit beta, IL-27B, Epstein-Barr virus-induced gene 3 protein, EBV-induced gene 3 protein

### Sequence Note

Arg21-Lys229

## Instruction

### Reconstitution

It is recommended to reconstitute the lyophilized protein in sterile H<sub>2</sub>O to a concentration of 200 µg/mL and incubate the stock solution for at least 20 min to ensure sufficient re-dissolved.

### Stability & Storage

This product is stable after storage at:

- -20°C for 12 months in lyophilized state from date of receipt.
- -20°C or -80°C for 1 month under sterile conditions after reconstitution.

Avoid repeated freeze/thaw cycles.

### Shipping

The product is shipped with polar packs. Upon receipt, store it immediately at -20°C or lower for long term storage.

## Image

### Tainan Headquarter

+886-6-2536677

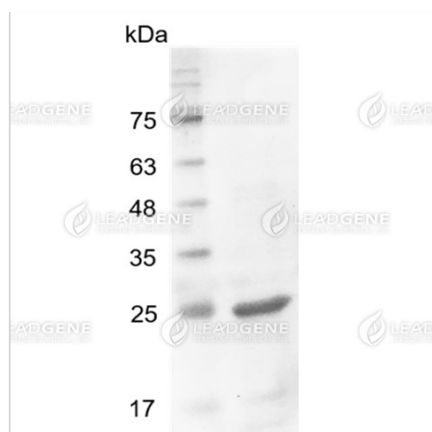
bd@leadgene.com.tw

### Innovation & Research Center

+886-2-27065528

### CLD Center

+886-6-2536677



SDS-PAGE analysis of recombinant human IL-27 (EBI3).

**Disclaimer :** For Research Use or Further Manufacturing Only.