

HIV-1 Capsid Protein p24, His Tag, E. coli

Catalog Number	LDG030PVE
Package	100 µg / Customized package

For full product information, images and publications, please visit [our website](#).



Overview

Description

The p24 protein of HIV-1 plays a critical role as a core structural component essential for virus assembly. Its measurement serves as an indicator of HIV-1 infection. AIDS symptoms and a decline in CD4 T-cell count usually manifest approximately two weeks following HIV infection, showing a correlation with elevated levels of both the virus and p24 protein. Additionally, a reduction in p24 antibody levels proves to be a valuable prognostic marker.

Specifications

Species of Origin

Human Immunodeficiency Virus

Expression system

Escherichia coli

Affinity Tag

His Tag (N-term)

Buffer

Lyophilized from a 0.2 µm filtered solution of PBS, pH 7.4.

Purity

>90% as determined by SDS-PAGE analysis.

Molecular weight

The protein has a calculated MW of 26.52 kDa.
The protein migrates as 22-24 kDa under reducing condition (SDS-PAGE analysis).

Endotoxin level

<1 EU per 1 µg of the protein by the LAL method.

Form

Lyophilized

Background

Tainan Headquarter

+886-6-2536677

bd@leadgene.com.tw

Innovation & Research Center

+886-2-27065528

CLD Center

+886-6-2536677

Synonyms

Gag

Uniprot ID

P04591

Sequence Note

Pro133 - Leu363

Instruction

Reconstitution

It is recommended to reconstitute the lyophilized protein in sterile H₂O to a concentration of 200 µg/mL and incubate the stock solution for at least 20 min to ensure sufficient re-dissolved.

Shipping

The product is shipped with polar packs. Upon receipt, store it immediately at -20°C or lower for long term storage.

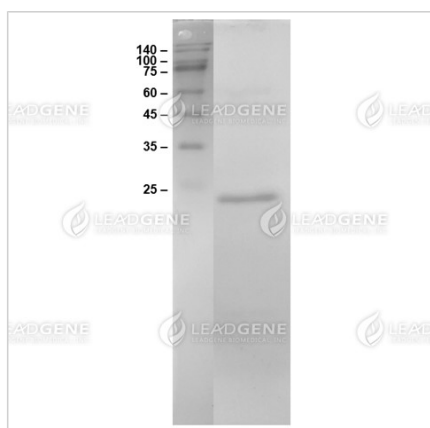
Stability & Storage

This product is stable after storage at:

- -20°C or -80°C for 12 months under sterile conditions from date of receipt.

Avoid repeated freeze/thaw cycles.

Image



SDS-PAGE analysis of HIV-1 capsid protein p24.

Tainan Headquarter

+886-6-2536677

bd@leadgene.com.tw

Innovation & Research Center

+886-2-27065528

CLD Center

+886-6-2536677

Disclaimer : For Research Use or Further Manufacturing Only.

Tainan Headquarter

☎ +886-6-2536677

✉ bd@leadgene.com.tw

Innovation & Research Center

☎ +886-2-27065528

CLD Center

☎ +886-6-2536677