

## Human FX, His Tag, CHO

<b>Catalog Number</b>	LDG030PHM
<b>Package</b>	5 µg / 20 µg / 100 µg / Customized package

For full product information, images and publications, please visit [our website](#).



### Specifications

#### Species of Origin

Human

#### Expression system

CHO

#### Affinity Tag

His Tag (N-term)

#### Buffer

Lyophilized from a 0.2 µm filtered solution of PBS, pH 7.4.

#### Purity

>90% as determined by SDS-PAGE analysis.

#### Molecular weight

The protein has a calculated MW of 16.97 kDa. The protein migrates as 15-20 kDa under reducing condition (SDS-PAGE analysis).

#### Endotoxin level

<0.1 EU per 1 µg of the protein by the LAL method.

#### Mycoplasma

Not detected

#### Form

Lyophilized

### Background

#### Tainan Headquarter

+886-6-2536677

bd@leadgene.com.tw

#### Innovation & Research Center

+886-2-27065528

#### CLD Center

+886-6-2536677

### Background

Factor X (FX), also known as Stuart factor, is a vitamin K-dependent serine protease essential for blood coagulation. Upon activation, FX is converted into its active form, Factor Xa (FXa), which plays a pivotal role in the coagulation cascade by catalyzing the conversion of prothrombin to thrombin. Thrombin, in turn, converts fibrinogen into fibrin, leading to the formation of a stable blood clot. Dysregulation of FX activity can result in bleeding disorders or thrombotic events. Understanding FX's role in hemostasis is crucial for developing therapies for coagulation disorders and managing thrombotic conditions.

### Uniprot ID

P00742

### Synonyms

Coagulation factor X, Stuart factor, Stuart-Prower factor

### Sequence Note

Ala41-Arg182

## Instruction

### Reconstitution

It is recommended to reconstitute the lyophilized protein in 4 mM HCl to a concentration of 200 µg/mL and incubate the stock solution for at least 20 min to ensure sufficient re-dissolved.

### Stability & Storage

This product is stable after storage at:

- -20°C for 12 months in lyophilized state from date of receipt.
- -20°C or -80°C for 1 month under sterile conditions after reconstitution.

Avoid repeated freeze/thaw cycles.

### Shipping

The product is shipped with polar packs. Upon receipt, store it immediately at -20°C or lower for long term storage.

## Image

### Tainan Headquarter

+886-6-2536677

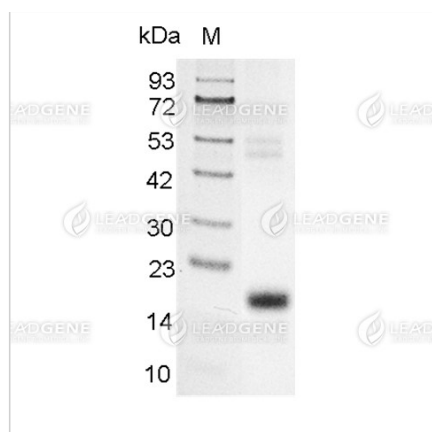
bd@leadgene.com.tw

### Innovation & Research Center

+886-2-27065528

### CLD Center

+886-6-2536677



SDS-PAGE analysis of recombinant human FX.

**Disclaimer :** For Research Use or Further Manufacturing Only.