

Human IL-25, His Tag, E. coli

Catalog Number	LDG029PHE
Package	5 µg / 20 µg / 100 µg / Customized package

For full product information, images and publications, please visit [our website](#).



Specifications

Species of Origin

Human

Affinity Tag

His Tag (C-term)

Purity

>98% as determined by SDS-PAGE analysis.

Activity

Measure by its ability to induce IL-8 secretion in human PBMCs. The ED₅₀ for this effect is <5 ng/mL.

Measure by its ability to induce CXCL1 secretion in HT29 cells. The ED₅₀ for this effect is <1 ng/mL.

Form

Lyophilized

Expression system

Escherichia coli

Buffer

Lyophilized from a 0.2 µm filtered solution of PBS, pH 8.0.

Molecular weight

The protein has a calculated MW of 17.68 kDa. The protein migrates as 19 kDa under reducing condition (SDS-PAGE analysis).

Endotoxin level

<0.1 EU per 1 µg of the protein by the LAL method.

Background

Tainan Headquarter

+886-6-2536677

bd@leadgene.com.tw

Innovation & Research Center

+886-2-27065528

CLD Center

+886-6-2536677

Background

Interleukin 25 (IL-25) is a cytokine with proinflammatory and anti-inflammatory effects, it predicts a molecular mass of 16.7 kDa. It can induce NF- κ B activation, and stimulate the production of IL-8, which is the major chemotactic substance of neutrophils.

Uniprot ID

#Q9H293

Synonyms

Interleukin-17E, IL-17E, Interleukin-25

Sequence Note

Tyr33-Gly177

Instruction

Reconstitution

It is recommended to reconstitute the lyophilized protein in sterile H₂O to a concentration of 200 μ g/mL and incubate the stock solution for at least 20 min to ensure sufficient re-dissolved.

Stability & Storage

This product is stable after storage at:

- -20°C for 12 months in lyophilized state from date of receipt.
- -20°C or -80°C for 1 month under sterile conditions after reconstitution.

Avoid repeated freeze/thaw cycles.

Shipping

The product is shipped with polar packs. Upon receipt, store it immediately at -20°C or lower for long term storage.

Image

Tainan Headquarter

+886-6-2536677

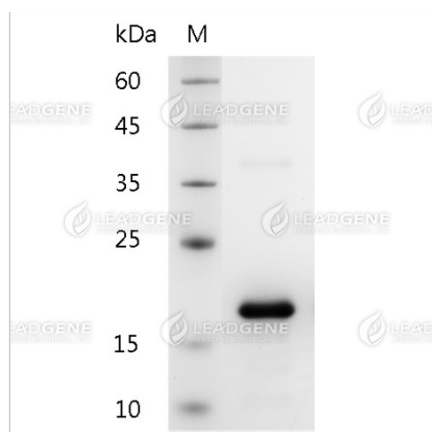
bd@leadgene.com.tw

Innovation & Research Center

+886-2-27065528

CLD Center

+886-6-2536677



SDS-PAGE analysis of recombinant human IL-25.

Disclaimer : For Research Use or Further Manufacturing Only.