

Human PD-1, His Tag, CHO

Catalog Number	LDG028PHM
Package	5 µg / 20 µg / 100 µg / Customized package

For full product information, images and publications, please visit [our website](#).



Specifications

Species of Origin

Human

Expression system

CHO

Affinity Tag

His Tag (C-term)

Buffer

Lyophilized from a 0.2 µm filtered solution of PBS, pH 7.4.

Purity

>95% as determined by SDS-PAGE analysis.

Molecular weight

The protein has a calculated MW of 16.76 kDa.
The protein migrates as 30-40 kDa under reducing condition (SDS-PAGE analysis).

Activity

Measured by its ability to bind human PD-L1 in functional ELISA. Immobilized Recombinant human PD-L1 Protein at 0.5 µg/mL (100µL/well) can bind Recombinant Human PD-1 Protein.

Endotoxin level

<0.1 EU per 1 µg of the protein by the LAL method.

Form

Lyophilized

Background

Tainan Headquarter

+886-6-2536677

bd@leadgene.com.tw

Innovation & Research Center

+886-2-27065528

CLD Center

+886-6-2536677

Background

PD-1, or programmed cell death protein 1, is a cell surface receptor protein primarily expressed on activated T cells. It plays a pivotal role in regulating immune responses by interacting with its ligands, PD-L1 and PD-L2, which are often expressed on cancer cells and antigen-presenting cells. Binding of PD-1 to its ligands leads to inhibition of T cell activation and proliferation, suppressing immune responses against cancer cells and contributing to immune evasion. Blocking the PD-1/PD-L1 interaction with therapeutic antibodies enhances T cell activity, making PD-1 inhibitors a promising approach in cancer immunotherapy.

Uniprot ID

NP_005009.2

Synonyms

Programmed cell death protein 1, CD279

Sequence Note

Met1-Gln167

Instruction

Reconstitution

It is recommended to reconstitute the lyophilized protein in 4 mM HCl to a concentration of 200 µg/mL and incubate the stock solution for at least 20 min to ensure sufficient re-dissolved.

Stability & Storage

This product is stable after storage at:

- -20°C for 12 months in lyophilized state from date of receipt.
- -20°C or -80°C for 1 month under sterile conditions after reconstitution.

Avoid repeated freeze/thaw cycles.

Shipping

The product is shipped with polar packs. Upon receipt, store it immediately at -20°C or lower for long term storage.

Image

Tainan Headquarter

+886-6-2536677

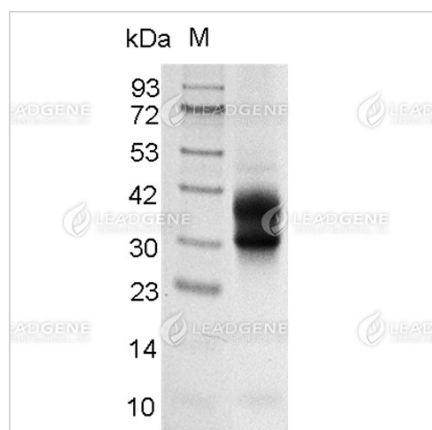
bd@leadgene.com.tw

Innovation & Research Center

+886-2-27065528

CLD Center

+886-6-2536677



SDS-PAGE analysis of recombinant human PD-1.

Disclaimer : For Research Use or Further Manufacturing Only.