

Monkeypox Virus (MPXV) L1R Protein, His Tag, E. coli

Catalog Number LDG027PVE

Package 100 µg / Customized package

For full product information, images and publications, please visit [our website](#).



Specifications

Species of Origin

Monkeypox virus

Affinity Tag

His Tag (C-term)

Purity

>95% as determined by SDS-PAGE analysis.

Form

Lyophilized

Expression system

Escherichia coli

Buffer

Lyophilized from a 0.2 µm filtered solution of PBS, pH 7.4.

Molecular weight

The protein has a calculated MW of 18.6 kDa. The protein migrates as 10-15 kDa under reducing condition (SDS-PAGE analysis).

Background

Tainan Headquarter

+886-6-2536677 +886-6-2531536

info@leadgene.com.tw

Taipei Office

+886-2-27065528

Background

Monkeypox virus is a zoonosis, which could do the infection between human and animals. The virus was first detected in laboratory monkeys by researchers in 1958. Monkeypox virus is a double-stranded DNA virus which is belong the orthopoxvirus (ex. Variola, vaccinia and cowpox). The DNA structure is more stable than the SARS-COV-2, so it won't have higher mutagenesis. In clinical trial, the syndrome is like smallpox's, but the mortality rate is lower.

Sequence Note

Met1-Gln152

Uniprot ID

#NP_536512.1

Instruction

Reconstitution

It is recommended to reconstitute the lyophilized protein in sterile H₂O to a concentration not less than 200 µg/mL and incubate the stock solution for at least 20 min to ensure sufficient re-dissolved.

Stability & Storage

This product is stable after storage at:

- -20°C for 12 months in lyophilized state from date of receipt.
- -20°C or -80°C for 1 month under sterile conditions after reconstitution.

Avoid repeated freeze/thaw cycles.

Shipping

The product is shipped with polar packs. Upon receipt, store it immediately at -20°C or lower for long term storage.

Image

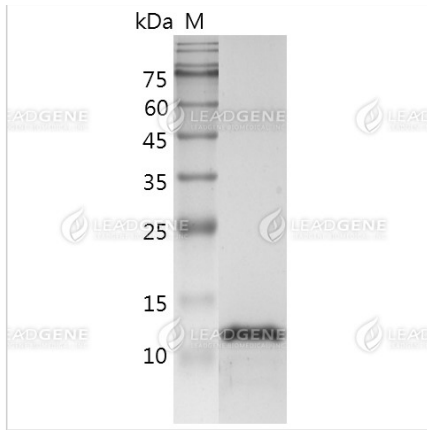
Tainan Headquarter

+886-6-2536677 +886-6-2531536

info@leadgene.com.tw

Taipei Office

+886-2-27065528



SDS-PAGE analysis of Monkeypox
Virus (MPXV) L1R protein.

Disclaimer : For Research Use or Further Manufacturing Only.

Tainan Headquarter

+886-6-2536677 +886-6-2531536

info@leadgene.com.tw

Taipei Office

+886-2-27065528