

## Human LAG-3, His Tag, HEK293

<b>Catalog Number</b>	LDG025PHM
<b>Package</b>	5 µg / 20 µg / 100 µg / Customized package

For full product information, images and publications, please visit [our website](#).



### Specifications

#### Species of Origin

Human

#### Expression system

HEK293

#### Affinity Tag

His Tag (C-term)

#### Buffer

Lyophilized from a 0.2 µm filtered solution of PBS, pH 7.4.

#### Purity

>95% as determined by SDS-PAGE analysis.

#### Molecular weight

The protein has a calculated MW of 47kDa.  
The protein migrates as 60 kDa under reducing condition (SDS-PAGE analysis).

#### Endotoxin level

<0.1 EU per 1 µg of the protein by the LAL method.

#### Form

Lyophilized

### Background

#### Tainan Headquarter

+886-6-2536677

bd@leadgene.com.tw

#### Innovation & Research Center

+886-2-27065528

#### CLD Center

+886-6-2536677

### Background

LAG-3, or Lymphocyte-activation gene 3, is a protein receptor expressed on the surface of certain immune cells, notably T cells and natural killer cells. It plays a pivotal role in regulating immune responses by inhibiting the activation and proliferation of T cells. LAG-3 is involved in immune tolerance and suppression, making it a promising target for immunotherapy in various diseases, including cancer and autoimmune disorders. Blocking LAG-3 can enhance anti-tumor immune responses, while agonists can suppress excessive immune activation. Studying LAG-3 function provides insights into immune regulation and therapeutic strategies.

### Uniprot ID

P18627

### Synonyms

CD233, FDC

### Sequence Note

Met1-Leu450

## Instruction

### Reconstitution

It is recommended to reconstitute the lyophilized protein in sterile H<sub>2</sub>O to a concentration of 200 µg/mL and incubate the stock solution for at least 20 min to ensure sufficient re-dissolved.

### Stability & Storage

This product is stable after storage at:

- -20°C for 12 months in lyophilized state from date of receipt.
- -20°C or -80°C for 1 month under sterile conditions after reconstitution.

Avoid repeated freeze/thaw cycles.

### Shipping

The product is shipped with polar packs. Upon receipt, store it immediately at -20°C or lower for long term storage.

## Image

### Tainan Headquarter

+886-6-2536677

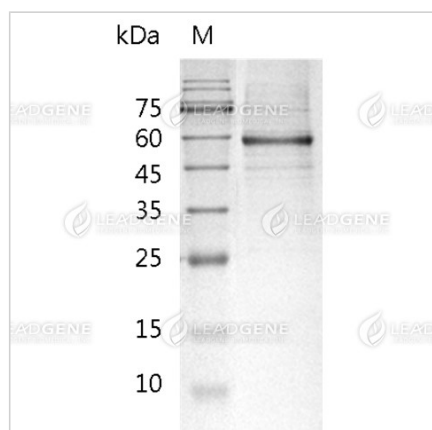
✉ [bd@leadgene.com.tw](mailto:bd@leadgene.com.tw)

### Innovation & Research Center

+886-2-27065528

### CLD Center

+886-6-2536677



SDS-PAGE analysis of recombinant human LAG-3 protein.

**Disclaimer :** For Research Use or Further Manufacturing Only.