

Anti-Metapneumovirus (MPV) M IgM Antibody [Clone 01]

| | |
|----------------|-----------------------------|
| Catalog Number | LDG0240YA |
| Package | 100 µg / Customized package |

For full product information, images and publications, please visit [our website](#).



Overview

Description

Anti-Metapneumovirus (MPV) M IgM Antibody is a mouse monoclonal antibody specifically targeting the matrix (M) protein of human metapneumovirus (hMPV). This IgM antibody is ideal for the detection of acute hMPV infection, as IgM is typically produced in the early immune response phase. The M protein is essential for viral assembly and budding, and serves as a reliable biomarker for viral presence.

Specifications

| | |
|--|---|
| Host Mouse | Clonality Monoclonal |
| Isotype IgM | Clone Name Clone 01 |
| Immunogen Human Metapneumovirus Matrix Protein | Reactivity Human |
| Application ELISA, LFA | Conjugation Unconjugated |
| Concentration Lot dependent | Buffer Phosphate Buffered Saline, pH 7.4. |

Tainan Headquarter

+886-6-2536677

bd@leadgene.com.tw

Innovation & Research Center

+886-2-27065528

CLD Center

+886-6-2536677

Form

Liquid

Background**Background**

Human metapneumovirus is a significant respiratory pathogen, especially in young children, immunocompromised individuals, and the elderly. It is associated with diseases such as bronchiolitis, pneumonia, and upper respiratory tract infections. This antibody is a valuable tool for studying the viral pathogenesis of hMPV and for the development of diagnostic assays aimed at early detection during acute infection phases.

Instruction**Shipping**

The product is shipped with polar packs. Upon receipt, store it immediately at -20°C or lower for long term storage.




Stability & Storage

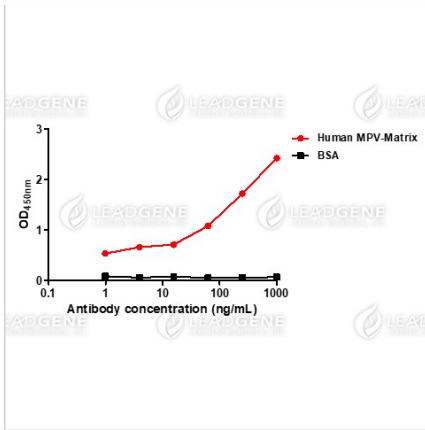
This product is stable after storage at:

- 2-8°C for 2 weeks under sterile conditions from date of receipt.
- -20°C or -80°C for 12 months under sterile conditions from date of receipt.

Avoid repeated freeze/thaw cycles.

Suggestion: Divide antibody into several vials. Keep only vials for usage at 2-8°C.

Image**Tainan Headquarter** +886-6-2536677 bd@leadgene.com.tw**Innovation & Research Center** +886-2-27065528**CLD Center** +886-6-2536677



ELISA titration of Anti-Metapneumovirus (MPV) M IgM Antibody. Titration curve of Anti-Metapneumovirus (MPV) M IgM Antibody in ELISA. Red: Anti-Metapneumovirus (MPV) Matrix protein; Black: BSA (negative control).

Disclaimer : For Research Use or Further Manufacturing Only.