

Mouse IL-1 Beta, His Tag, E. coli

Catalog Number	LDG023PME
Package	5 µg / 20 µg / 100 µg / Customized package

For full product information, images and publications, please visit [our website](#).



Specifications

Species of Origin

Mouse

Expression system

Escherichia coli

Affinity Tag

His Tag (C-term)

Buffer

Lyophilized from a 0.2 µm filtered solution of PBS, pH 7.4.

Purity

>98% as determined by SDS-PAGE analysis.

Molecular weight

The protein has a calculated MW of 18.3 kDa. The protein migrates as 17 kDa under reducing condition (SDS-PAGE analysis).

Activity

Measure by its ability to induce D10.G4.1 cells proliferation. The ED₅₀ for this effect is <8 pg/mL. The specific activity of recombinant mouse IL-1 beta is approximately >1.2x 10⁸ IU/mg.

Endotoxin level

<0.1 EU per 1 µg of the protein by the LAL method.

Form

Lyophilized

Background

Tainan Headquarter

+886-6-2536677

bd@leadgene.com.tw

Innovation & Research Center

+886-2-27065528

CLD Center

+886-6-2536677

Background

Interleukin-1 beta (IL-1 β) is a major cytokine expressed in macrophage, NK cells, monocytes, and neutrophils. It also plays fundamental role in inflammatory response, including monocyte activation, which is essential for the host defense and pathogen resistance. Pro-IL-1 β is cleaved by cytosolic caspase 1 to form mature IL-1 β .

Uniprot ID

#P10749

Synonyms

Interleukin-1 beta

Sequence Note

Val118-Ser269

Instruction**Reconstitution**

It is recommended to reconstitute the lyophilized protein in sterile H₂O to a concentration of 200 μ g/mL and incubate the stock solution for at least 20 min to ensure sufficient re-dissolved.

Stability & Storage




This product is stable after storage at:

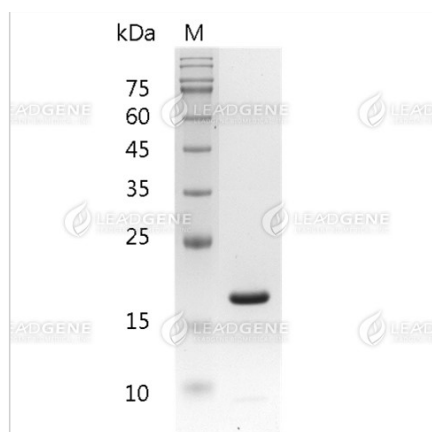
- -20°C for 12 months in lyophilized state from date of receipt.
- -20°C or -80°C for 1 month under sterile conditions after reconstitution.

Avoid repeated freeze/thaw cycles.

Shipping

The product is shipped with polar packs. Upon receipt, store it immediately at -20°C or lower for long term storage.

Image**Tainan Headquarter** +886-6-2536677 bd@leadgene.com.tw**Innovation & Research Center** +886-2-27065528**CLD Center** +886-6-2536677



SDS-PAGE analysis of recombinant
mouse IL-1 beta

Disclaimer : For Research Use or Further Manufacturing Only.