

Mouse CD138, His Tag, CHO

Catalog Number	LDG019PMM
Package	5 µg / 20 µg / 100 µg / Customized package

For full product information, images and publications, please visit [our website](#).



Specifications

Species of Origin

Mouse

Affinity Tag

His Tag (C-term)

Purity

>95% as determined by SDS-PAGE analysis.

Endotoxin level

<0.1 EU per 1 µg of the protein by the LAL method.

Form

Lyophilized

Expression system

CHO

Buffer

Lyophilized from a 0.2 µm filtered solution of PBS, pH 7.4.

Molecular weight

The protein has a calculated MW of 24.77 kDa.
The protein migrates as 38-72 kDa under reducing condition (SDS-PAGE analysis).

Mycoplasma

Not detected

Background

Tainan Headquarter

+886-6-2536677

bd@leadgene.com.tw

Innovation & Research Center

+886-2-27065528

CLD Center

+886-6-2536677

Background

CD138, also known as Syndecan-1, is a protein expressed on the surface of many cells, most notably plasma cells. It acts as a receptor and plays a crucial role in cell adhesion, migration, and proliferation. CD138 is involved in various physiological processes, including wound healing, inflammation, and angiogenesis. It's also a key therapeutic target in multiple myeloma, a cancer of plasma cells. In this context, CD138 serves as a marker for diagnosis and disease progression, and therapies like monoclonal antibodies have been developed to target it.

Uniprot ID

NP_035649.1

Synonyms

Syndecan-1, SYND1

Sequence Note

Met1-Glu252

Instruction

Reconstitution

It is recommended to reconstitute the lyophilized protein in sterile H₂O to a concentration not less than 0.2 mg/mL and incubate the stock solution for at least 20 min to ensure sufficient re-dissolved.

Stability & Storage

This product is stable after storage at:

- -20°C for 12 months in lyophilized state from date of receipt.
- -20°C or -80°C for 1 month under sterile conditions after reconstitution.

Avoid repeated freeze/thaw cycles.

Shipping

The product is shipped with polar packs. Upon receipt, store it immediately at -20°C or lower for long term storage.

Image

Tainan Headquarter

+886-6-2536677

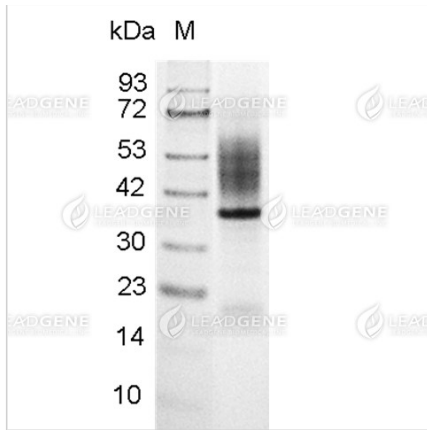
✉ bd@leadgene.com.tw

Innovation & Research Center

+886-2-27065528

CLD Center

+886-6-2536677



SDS-PAGE analysis of recombinant mouse CD138.

Disclaimer : For Research Use or Further Manufacturing Only.