

## Mouse LIF, His Tag, E. coli

Catalog Number	LDG019PME
Package	5 µg / 20 µg / 100 µg / Customized package

For full product information, images and publications, please visit [our website](#).



### Specifications

#### Species of Origin

Mouse

#### Affinity Tag

His Tag (N-term)

#### Purity

>95% as determined by SDS-PAGE analysis.

#### Activity

Measure by its ability to induce IL-6 secretion in M1 cells. The ED<sub>50</sub> for this effect is <0.5 ng/mL. The specific activity of recombinant mouse LIF is > 2 x 10<sup>6</sup> IU/mg.

#### Form

Lyophilized

#### Expression system

Escherichia coli

#### Buffer

Lyophilized from a 0.2 µm filtered solution of PBS, pH 7.4.

#### Molecular weight

The protein has a calculated MW of 20.68 kDa. The protein migrates as 17-25 kDa under reducing condition (SDS-PAGE analysis).

#### Endotoxin level

<0.1 EU per 1 µg of the protein by the LAL method.

### Background

#### Tainan Headquarter

+886-6-2536677

bd@leadgene.com.tw

#### Innovation & Research Center

+886-2-27065528

#### CLD Center

+886-6-2536677

### Background

Leukemia inhibitory factor (LIF) is a pleiotropic glycoprotein, belonging to the IL-6 receptor family. Mouse LIF shares 79% sequence homology with human LIF. LIF is a 19.7 kDa protein containing 202 amino acid which high expression in human liver, bone, uterus, kidney and the central nervous system. LIF is a inducer of differentiation in M1 leukaemia cells, osteoblasts and glia. Not only stimulates proliferation of DA1 cells inhibit proliferation of corticotrophs and promote cell survival in some cell types but also induces apoptosis in others.

### Uniprot ID

#P09056

### Synonyms

Leukemia inhibitory factor, Differentiation-stimulating factor, D factor, LIF

### Sequence Note

Ser24-Phe203

## Instruction

### Reconstitution

It is recommended to reconstitute the lyophilized protein in sterile H<sub>2</sub>O to a concentration of 200 µg/mL and incubate the stock solution for at least 20 min to ensure sufficient re-dissolved.

### Stability & Storage

This product is stable after storage at:

- -20°C for 12 months in lyophilized state from date of receipt.
- -20°C or -80°C for 1 month under sterile conditions after reconstitution.

Avoid repeated freeze/thaw cycles.

### Shipping

The product is shipped with polar packs. Upon receipt, store it immediately at -20°C or lower for long term storage.

## Image

### Tainan Headquarter

+886-6-2536677

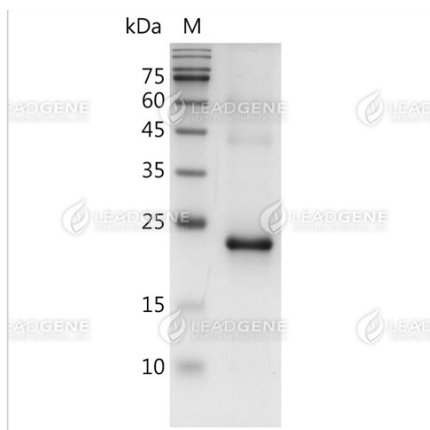
✉ [bd@leadgene.com.tw](mailto:bd@leadgene.com.tw)

### Innovation & Research Center

+886-2-27065528

### CLD Center

+886-6-2536677



SDS-PAGE analysis of recombinant mouse LIF.

**Disclaimer :** For Research Use or Further Manufacturing Only.