

Anti-CD9 Antibody [Clone 9-1]

Catalog Number	LDG0196YA
Package	100 µg / Customized package

For full product information, images and publications, please visit [our website](#).



Overview

Description

CD9, also known as CD9 molecule, is a transmembrane protein belonging to the tetraspanin family. It functions as a cell surface glycoprotein with four transmembrane regions and two extracellular loops containing conserved disulfide bonds found in the tetraspanin family. CD9 plays a crucial role in various biological processes, including adhesion, motility, membrane fusion, signaling, and protein trafficking. Moreover, CD9 is implicated in platelet activation and aggregation, muscle cell fusion, and myotube maintenance. Overall, CD9's multifaceted functions make it a significant protein with implications in various biological processes and medical applications.

Product Note

Recommended dilution factor:
FACS: 1:500-1000

Note: Working dilution for specific application should be determined by the investigator to obtain the best conditions.

Specifications

Host

Mouse

Clonality

Monoclonal

Isotype

IgG2

Clone Name

clone 9-1

Immunogen

CD9

Reactivity

Human

Tainan Headquarter

+886-6-2536677

bd@leadgene.com.tw

Innovation & Research Center

+886-2-27065528

CLD Center

+886-6-2536677

Application

FACS

Concentration

1 mg/mL

Specificity

CD9

Conjugation

Unconjugated

Buffer

Phosphate Buffered Saline, pH 7.4.

Form

Liquid

Instruction
Shipping

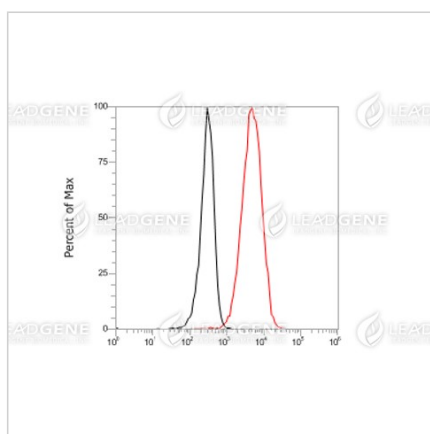
The product is shipped with polar packs. Upon receipt, store it immediately at 2-8°C for long term storage.

Stability & Storage

This product is stable after storage at:


- 2-8°C for 6 months under sterile conditions from date of receipt.

Briefly centrifuge vials before opening.


Image



THP-1 cells were respectively stained with mouse anti-CD9 Antibody (red) and negative control Antibody (black).

Disclaimer : For Research Use or Further Manufacturing Only.

Tainan Headquarter
 +886-6-2536677

 bd@leadgene.com.tw

Innovation & Research Center
 +886-2-27065528

CLD Center
 +886-6-2536677