

Mouse CCL4, His Tag, E. coli

Catalog Number	LDG018PME
Package	5 µg / 20 µg / 100 µg / Customized package

For full product information, images and publications, please visit [our website](#).



Specifications

Species of Origin

Mouse

Affinity Tag

His Tag (N-term)

Purity

>98% as determined by SDS-PAGE analysis.

Activity

Measure by its ability to chemoattract human PBMCs using a concentration range of 20.0 - 200.0 ng/mL.

Note: Results may vary from different PBMC donors.

Form

Lyophilized

Expression system

Escherichia coli

Buffer

Lyophilized from a 0.2 µm filtered solution of PBS, pH 7.4.

Molecular weight

The protein has a calculated MW of 8.64 kDa.

The protein migrates as 11-17 kDa under reducing condition (SDS-PAGE analysis).

Endotoxin level

<0.1 EU per 1 µg of the protein by the LAL method.

Background

Tainan Headquarter

+886-6-2536677

bd@leadgene.com.tw

Innovation & Research Center

+886-2-27065528

CLD Center

+886-6-2536677

Background

C-C Motif Chemokine Ligand 4 (CCL4) is a 7.66 kDa cytokine with 69 amino acid residues. CCL4, also named macrophage inflammatory protein-1 β (MIP-1 β), is mainly secreted from neutrophils, monocytes, B cells, T cells, fibroblasts, endothelial cells, and epithelial cells. In addition, CCL4 participates in immune responses, including recruitment of immune cells like lymphocytes, monocytes, and leukocytes, response to IL-1 and IFN γ , and production of TNF when CCL4 binds to CCR5.

Uniprot ID

#P14097

Synonyms

C-C motif chemokine 4, Immune activation protein 2, ACT-2, ACT2, Macrophage inflammatory protein 1-beta, MIP-1-beta, Protein H400, SIS-gamma, Small-inducible cytokine A4

Sequence Note

Ala24-Asn92

Instruction

Reconstitution

It is recommended to reconstitute the lyophilized protein in sterile H₂O to a concentration not less than 200 μ g/mL and incubate the stock solution for at least 20 min to ensure sufficient re-dissolved.

Stability & Storage

This product is stable after storage at:

- -20°C for 12 months in lyophilized state from date of receipt.
- -20°C or -80°C for 1 month under sterile conditions after reconstitution.

Avoid repeated freeze/thaw cycles.

Shipping

The product is shipped with polar packs. Upon receipt, store it immediately at -20°C or lower for long term storage.

Image

Tainan Headquarter

+886-6-2536677

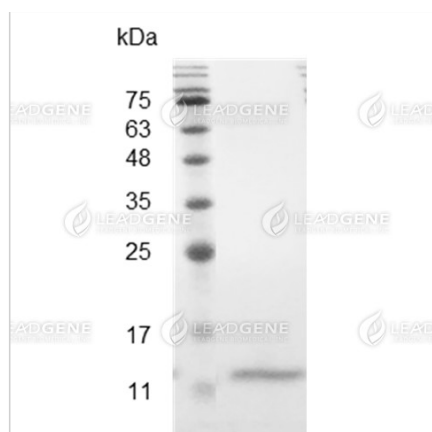
✉ bd@leadgene.com.tw

Innovation & Research Center

+886-2-27065528

CLD Center

+886-6-2536677



SDS-PAGE analysis of recombinant mouse CCL4.

Disclaimer : For Research Use or Further Manufacturing Only.