

Anti-Influenza B Virus NP Antibody [Clone IB08]

Catalog Number	LDG0183YA
Package	100 µg / Customized package

For full product information, images and publications, please visit [our website](#).



Overview

Description

Anti-Influenza B virus NP Antibody [clone IB08] only recognizes nucleocapsid protein (NP) of influenza B viruses but not influenza A viruses. Influenza B viruses are RNA viruses and divided into two genetic lineages (B/Yamagata and B/Victoria). Influenza B viruses are not classified by subtype like influenza A viruses.

Product Note

Recognize Influenza B virus NP in Lateral Flow, when clone IB08 antibody was paired with Anti-Influenza B virus NP Antibody [clone IB07] (cat. LDG0182YA).

Recommended dilution factor:
ELISA: 1:5000-20000

Note: Working dilution for specific application should be determined by the investigator to obtain the best conditions.

Specifications

Host

Mouse

Clonality

Monoclonal

Isotype

IgG2a

Clone Name

clone IB08

Immunogen

Recombinant Influenza B virus Nucleocapsid protein

Reactivity

Influenza B virus

Tainan Headquarter

+886-6-2536677

bd@leadgene.com.tw

Innovation & Research Center

+886-2-27065528

CLD Center

+886-6-2536677

Application

ELISA, CLIA, LFIA

Concentration

1 mg/mL

Specificity

Nucleocapsid protein

Conjugation

Unconjugated

Buffer

Phosphate Buffered Saline containing 0.03% ProClin 300, pH 7.4.

Form

Liquid

Instruction**Shipping**

The product is shipped with polar packs. Upon receipt, store it immediately at -20°C or lower for long term storage.




Stability & Storage

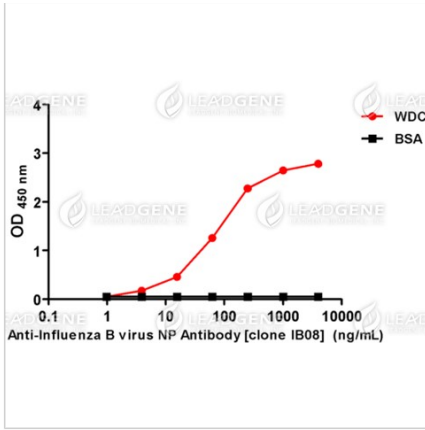
This product is stable after storage at:

- 2-8°C for 2 weeks under sterile conditions from date of receipt.
- -20°C or -80°C for 12 months under sterile conditions from date of receipt.

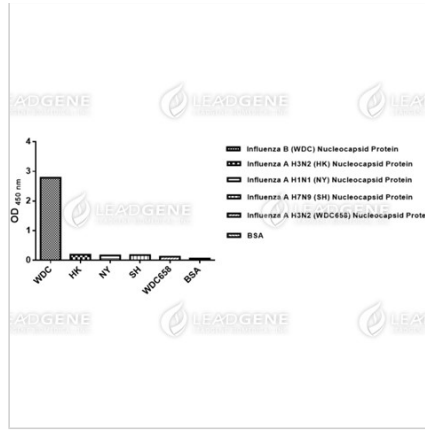
Avoid repeated freeze/thaw cycles.

Suggestion: Divide antibody into several vials. Keep only vials for usage at 2-8°C.

Image**Tainan Headquarter** +886-6-2536677 bd@leadgene.com.tw**Innovation & Research Center** +886-2-27065528**CLD Center** +886-6-2536677



ELISA titration of Anti-Influenza B virus NP Antibody [clone IB08]
Titration curve of anti-Influenza B virus NP Antibody in ELISA. Red: WDC; Black: BSA (negative control).



ELISA assay of Anti-Influenza B virus NP Antibody [clone IB08]
Indirect ELISA analysis was performed by coating a plate with recombinant NP protein of influenza B virus or influenza A virus and probing with anti-Influenza B virus NP Antibody.

Disclaimer : For Research Use or Further Manufacturing Only.