

## Anti-Influenza B Virus NP Antibody [Clone IB07]

<b>Catalog Number</b>	LDG0182YA
<b>Package</b>	100 µg / Customized package

For full product information, images and publications, please visit [our website](#).



### Overview

#### Description

Anti-Influenza B virus NP Antibody [clone IB07] only recognizes nucleocapsid protein (NP) of influenza B viruses but not influenza A viruses. Influenza B viruses are RNA viruses and divided into two genetic lineages (B/Yamagata and B/Victoria). Influenza B viruses are not classified by subtype like influenza A viruses.

#### Product Note

Recognize Influenza B virus NP in Lateral Flow, when clone IB07 antibody was paired with AntiInfluenza B virus NP Antibody [clone IB08] (cat. LDG0183YA).

Recommended dilution factor:  
ELISA: 1:5000-20000

Note: Working dilution for specific application should be determined by the investigator to obtain the best conditions.

### Specifications

#### Host

Mouse

#### Clonality

Monoclonal

#### Isotype

IgG1

#### Clone Name

clone IB07

#### Immunogen

Recombinant Influenza B virus Nucleocapsid protein

#### Reactivity

Influenza B virus

#### Tainan Headquarter

+886-6-2536677

bd@leadgene.com.tw

#### Innovation & Research Center

+886-2-27065528

#### CLD Center

+886-6-2536677

**Application**

ELISA, CLIA, LFIA

**Concentration**

1 mg/mL

**Specificity**

Nucleocapsid protein

**Conjugation**

Unconjugated

**Buffer**

Phosphate Buffered Saline containing 0.03% ProClin 300, pH 7.4.

**Form**

Liquid

**Instruction****Shipping**

The product is shipped with polar packs. Upon receipt, store it immediately at -20°C or lower for long term storage.

**Stability & Storage**

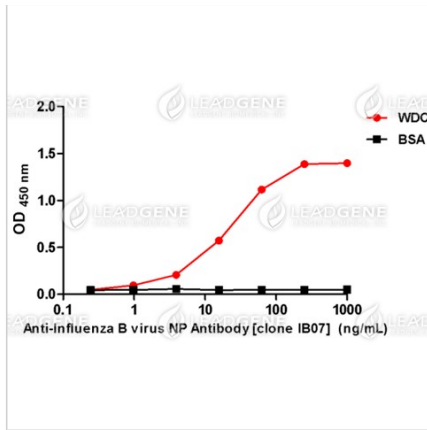
This product is stable after storage at:

- 2-8°C for 2 weeks under sterile conditions from date of receipt.
- -20°C or -80°C for 12 months under sterile conditions from date of receipt.

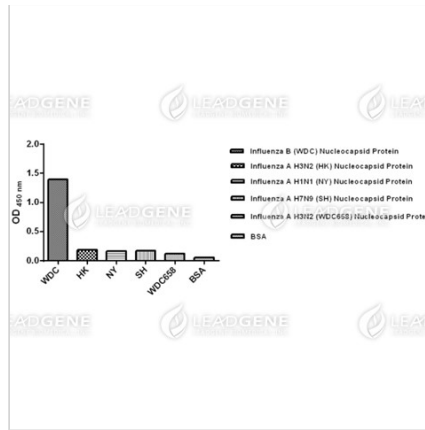
Avoid repeated freeze/thaw cycles.

Suggestion: Divide antibody into several vials. Keep only vials for usage at 2-8°C.

**Image****Tainan Headquarter** +886-6-2536677 [bd@leadgene.com.tw](mailto:bd@leadgene.com.tw)**Innovation & Research Center** +886-2-27065528**CLD Center** +886-6-2536677



ELISA titration of Anti-Influenza B virus NP Antibody [clone IB07]  
Titration curve of anti-Influenza B virus NP Antibody in ELISA. Red: WDC; Black: BSA (negative control).



ELISA assay of Anti-Influenza B virus NP Antibody [clone IB07]  
Indirect ELISA analysis was performed by coating a plate with recombinant NP protein of influenza B virus or influenza A virus and probing with anti-Influenza B virus NP Antibody.

**Disclaimer :** For Research Use or Further Manufacturing Only.