

Human Sonic Hedgehog (C24II), Tag Free, HEK293

Catalog Number	LDG017PVM
Package	5 µg / 20 µg / 100 µg / Customized package

For full product information, images and publications, please visit [our website](#).



Specifications

Species of Origin

Human

Affinity Tag

Tag Free

Purity

>95% as determined by SDS-PAGE analysis.

Activity

Measured by its ability to induce alkaline phosphatase production by C3H/10T1/2 mouse embryonic fibroblast cells. The ED₅₀ for this effect is 0.5-2 µg/mL.

Form

Lyophilized

Expression system

HEK293

Buffer

Lyophilized from a 0.2 µm filtered solution of PBS, pH 7.4.

Molecular weight

The protein has a calculated MW of 19.67 kDa.
The protein migrates as 15-25 kDa under reducing condition (SDS-PAGE analysis).

Endotoxin level

<0.1 EU per 1 µg of the protein by the LAL method.

Background

Tainan Headquarter

+886-6-2536677

bd@leadgene.com.tw

Innovation & Research Center

+886-2-27065528

CLD Center

+886-6-2536677

Background

Sonic Hedgehog (SHH, C24II) is a morphogen belonging to the Hedgehog family of signaling proteins. It plays an essential role in embryonic development, tissue patterning, and stem cell regulation by activating Hedgehog signaling pathways. Aberrant SHH signaling is associated with developmental disorders and various cancers. The C24II variant provides a biologically active form of SHH, widely used in developmental biology, stem cell, and cancer research.

Uniprot ID

Q15465

Synonyms

SHH, Sonic Hedgehog protein, HHG-1, Sonic hedgehog homolog, HHG1, Hedgehog protein, Shh unprocessed N-terminal signaling and C-terminal autoprocessing domains, ShhNC

Sequence Note

Gly25-Gly197

Instruction

Reconstitution

It is recommended to reconstitute the lyophilized protein in sterile H₂O to a concentration of 200 µg/mL and incubate the stock solution for at least 20 min to ensure sufficient re-dissolved.

Stability & Storage

This product is stable after storage at:

- -20°C for 12 months in lyophilized state from date of receipt.
- -20°C or -80°C for 1 month under sterile conditions after reconstitution.

Avoid repeated freeze/thaw cycles.

Shipping

The product is shipped with polar packs. Upon receipt, store it immediately at -20°C or lower for long term storage.

Image

Tainan Headquarter

+886-6-2536677

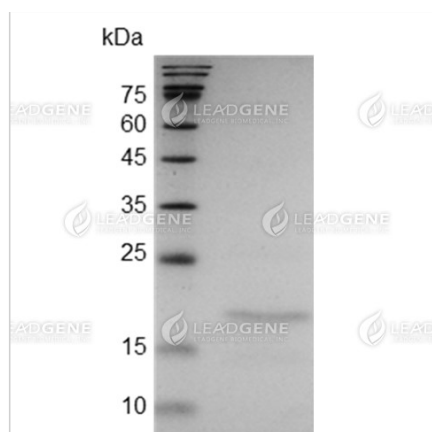
✉ bd@leadgene.com.tw

Innovation & Research Center

+886-2-27065528

CLD Center

+886-6-2536677



SDS-PAGE analysis of Human Sonic Hedgehog (C24II).

Disclaimer : For Research Use or Further Manufacturing Only.