

## Human IL-15, His Tag, E. coli

<b>Catalog Number</b>	LDG017PHE
<b>Package</b>	5 µg / 20 µg / 100 µg / Customized package

For full product information, images and publications, please visit [our website](#).



### Specifications

#### Species of Origin

Human

#### Affinity Tag

His Tag (N-term)

#### Purity

>98% as determined by SDS-PAGE analysis.

#### Activity

Measure by its ability to induce proliferation in CTLL-2 cells. The ED<sub>50</sub> for this effect is < 3 ng/mL. The specific activity of recombinant human IL-15 is > 2 x 10<sup>6</sup> IU/mg.

#### Form

Lyophilized

#### Expression system

Escherichia coli

#### Buffer

Lyophilized from a 0.2 µm filtered solution of NaPi buffer, 0.018% SDS, pH 7.5.

#### Molecular weight

The protein has a calculated MW of 13.7 kDa. The protein migrates as 13 kDa under reducing condition (SDS-PAGE analysis).

#### Endotoxin level

<0.01 EU per 1 µg of the protein by the LAL method.

### Background

#### Tainan Headquarter

+886-6-2536677

bd@leadgene.com.tw

#### Innovation & Research Center

+886-2-27065528

#### CLD Center

+886-6-2536677

### Background

Interleukin-15 (IL-15) is a 14-15 kDa glycoprotein with immune regulatory functions in many diverse cell types. IL-15 can be constitutively expressed in a variety of cell types stored as intracellular protein in the cytoplasm as well as transport to the cell surface, while only secreted from some cell types including monocytes, dendritic cells, epithelial cells, bone marrow stromal cells, and fibroblasts. As a pleiotropic cytokine, IL-15 mediates the crosstalk between innate immunity and adaptive immunity whose principal role is to kill virally infected cells. IL-15 plays a crucial role in the development, differentiation, and survival of NK cells. In monocytes, IL-15 induces the production of IL-8 and monocyte chemoattractant protein 1 (MCP-1), which recruits neutrophils and monocytes to sites of infection. IL-15 can also act as a chemo-attractant in T lymphocytes and regulate the differentiation of T lymphocytes.

### Uniprot ID

#P40933

### Synonyms

Interleukin-15

### Sequence Note

Asn49-Ser162

## Instruction

### Reconstitution

It is recommended to reconstitute the lyophilized protein in sterile H<sub>2</sub>O to a concentration of 200 µg/mL and incubate the stock solution for at least 20 min to ensure sufficient re-dissolved.

### Shipping

The product is shipped with polar packs. Upon receipt, store it immediately at -20°C or lower for long term storage.

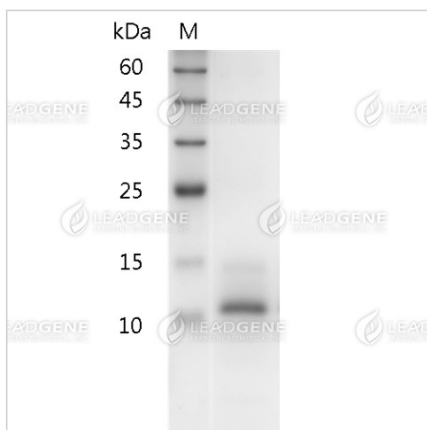
### Stability & Storage

This product is stable after storage at:

- -20°C for 12 months in lyophilized state from date of receipt.
- -20°C or -80°C for 1 month under sterile conditions after reconstitution.

Avoid repeated freeze/thaw cycles.

### Image



SDS-PAGE analysis of recombinant human IL-15.

**Disclaimer :** For Research Use or Further Manufacturing Only.