

Anti-Influenza A Virus NP Antibody [Clone IA05]

Catalog Number	LDG0172YA
Package	100 µg / Customized package

For full product information, images and publications, please visit [our website](#).



Overview

Description

Human anti-influenza A virus NP antibody only recognizes nucleocapsid protein (NP) of influenza A viruses but not influenza B viruses. Influenza A viruses are RNA viruses, and their subtypes are labeled according to an H number (for the type of hemagglutinin) and an N number (for the type of neuraminidase).

Product Note

Recognize Influenza A virus NP in Lateral Flow, when clone IA05 antibody was paired with Anti-Influenza A virus NP Antibody [clone LGA4] (cat. 18901).

Recognize Influenza A virus NP in ELISA, when clone IA05 antibody was paired with Anti-Influenza A virus NP Antibody [clone LGA3] (cat. 15771), [clone LGA4] (cat. LDG0089YA), [clone LGA7] (cat. LDG0090YA) or [clone IA06] (cat. LDG0173YA).

Recommended dilution factor:

ELISA: 1:5000-20000

Note: Working dilution for specific application should be determined by the investigator to obtain the best conditions.

Specifications

Host	Clonality
Mouse	Monoclonal
Isotype	Clone Name
IgG2b	clone IA05
Immunogen	Reactivity
Recombinant Influenza A virus nucleocapsid protein	Influenza A virus

Tainan Headquarter

+886-6-2536677

bd@leadgene.com.tw

Innovation & Research Center

+886-2-27065528

CLD Center

+886-6-2536677

Application

ELISA, CLIA, LFIA, IFA

Concentration

1 mg/mL

Specificity

Nucleocapsid protein

Conjugation

Unconjugated

Buffer

Phosphate Buffered Saline containing 0.03% ProClin 300, pH 7.4.

Form

Liquid

Instruction**Shipping**

The product is shipped with polar packs. Upon receipt, store it immediately at -20°C or lower for long term storage.



Stability & Storage

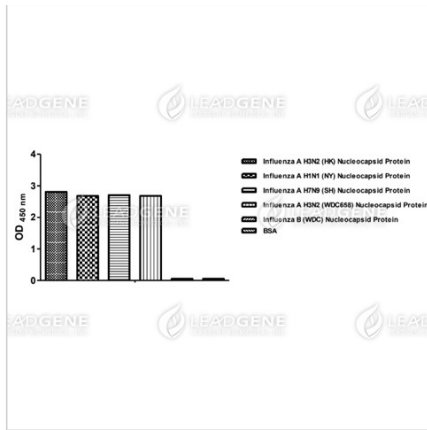
This product is stable after storage at:

- 2-8°C for 2 weeks under sterile conditions from date of receipt.
- -20°C or -80°C for 12 months under sterile conditions from date of receipt.

Avoid repeated freeze/thaw cycles.

Suggestion: Divide antibody into several vials. Keep only vials for usage at 2-8°C.

Image**Tainan Headquarter** +886-6-2536677 bd@leadgene.com.tw**Innovation & Research Center** +886-2-27065528**CLD Center** +886-6-2536677



ELISA titration of Anti-Influenza A
virus NP Antibody [clone IA05]

Disclaimer : For Research Use or Further Manufacturing Only.