

## Anti-Influenza A Virus NP Antibody [Clone LGA3]

**Catalog Number** LDG0171YA

**Package** 100 µg / Customized package

For full product information, images and publications, please visit [our website](#).



### Overview

#### Description

Human anti-influenza A virus NP antibody only recognizes nucleocapsid protein (NP) of influenza A viruses but not influenza B viruses. Influenza A viruses are RNA viruses, and their subtypes are labeled according to an H number (for the type of hemagglutinin) and an N number (for the type of neuraminidase).

#### Product Note

Recognize Influenza A virus NP in Lateral Flow and ELISA, when recombinant LGA3 antibody was paired with Anti-Influenza A virus NP Antibody [clone IA05] (cat. LDG0172YA).

Recommended dilution factor:

ELISA: 1:5000-20000

Note: Working dilution for specific application should be determined by the investigator to obtain the best conditions.

### Specifications

#### Clonality

Recombinant human IgG

#### Isotype

IgG1

#### Clone Name

clone LGA3

#### Reactivity

Influenza A virus

#### Application

ELISA, CLIA, LFIA

#### Conjugation

Unconjugated

#### Tainan Headquarter

+886-6-2536677

bd@leadgene.com.tw

#### Innovation & Research Center

+886-2-27065528

#### CLD Center

+886-6-2536677

## Concentration

1 mg/mL

## Buffer

Phosphate Buffered Saline containing 0.03% ProClin 300, pH 7.4.

## Specificity

Nucleocapsid protein

## Form

Liquid

## Instruction

### Shipping

The product is shipped with polar packs. Upon receipt, store it immediately at -20°C or lower for long term storage.

### Stability & Storage

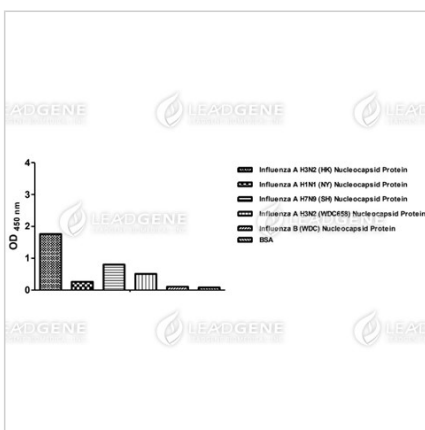
This product is stable after storage at:

- 2-8°C for 2 weeks under sterile conditions from date of receipt.
- -20°C or -80°C for 12 months under sterile conditions from date of receipt.

Avoid repeated freeze/thaw cycles.

Suggestion: Divide antibody into several vials. Keep only vials for usage at 2-8°C.

## Image



ELISA titration of Anti-Influenza A virus NP Antibody [Clone LGA3]

**Disclaimer :** For Research Use or Further Manufacturing Only.

---

**Tainan Headquarter**

☎ +886-6-2536677

✉ [bd@leadgene.com.tw](mailto:bd@leadgene.com.tw)

---

**Innovation & Research Center**

☎ +886-2-27065528

---

**CLD Center**

☎ +886-6-2536677