

Mouse CCL2, His Tag, E. coli

Catalog Number	LDG016PME
Package	5 µg / 20 µg / 100 µg / Customized package

For full product information, images and publications, please visit [our website](#).



Specifications

Species of Origin

Mouse

Affinity Tag

His Tag (N-term)

Purity

>98% as determined by SDS-PAGE analysis.

Activity

Measure by its ability to chemoattract human THP-1 cells using a concentration range of 10-100 ng/mL.

Form

Lyophilized

Expression system

Escherichia coli

Buffer

Lyophilized from a 0.2 µm filtered solution of PBS, pH 7.4.

Molecular weight

The protein has a calculated MW of 14.65 kDa. The protein migrates as 17-25 kDa under reducing condition (SDS-PAGE analysis).

Endotoxin level

<0.1 EU per 1 µg of the protein by the LAL method.

Background

Tainan Headquarter

+886-6-2536677

bd@leadgene.com.tw

Innovation & Research Center

+886-2-27065528

CLD Center

+886-6-2536677

Background

C-C Motif Chemokine Ligand 2 (CCL2) is a 13.88 kDa cytokine with 125 amino acid residues and is also known as monocyte chemoattractant protein 1 (MCP1). CCL2 is mainly secreted from monocytes, macrophages, and dendritic cells. It regulates many biological functions, such as recruitments of monocytes, memory T cells, eosinophils, and dendritic cells, extravasation of helper T cells, response to TNF α and IFN γ , and angiogenesis. In addition, upon binding with CCR4, it initiates leukocyte migration response to inflammation.

Uniprot ID

P10148

Synonyms

C-C motif chemokine 2, Monocyte chemoattractant protein 1, Monocyte chemotactic protein 1 MCP-1, Platelet-derived Growth Factors-inducible protein JE, Small-inducible cytokine A2

Sequence Note

Gln24-Ala127

Instruction

Reconstitution

It is recommended to reconstitute the lyophilized protein in sterile H₂O to a concentration of 200 μ g/mL and incubate the stock solution for at least 20 min to ensure sufficient re-dissolved.

Stability & Storage

This product is stable after storage at:

- -20°C for 12 months in lyophilized state from date of receipt.
- -20°C or -80°C for 1 month under sterile conditions after reconstitution.

Avoid repeated freeze/thaw cycles.

Shipping

The product is shipped with polar packs. Upon receipt, store it immediately at -20°C or lower for long term storage.

Image

Tainan Headquarter

+886-6-2536677

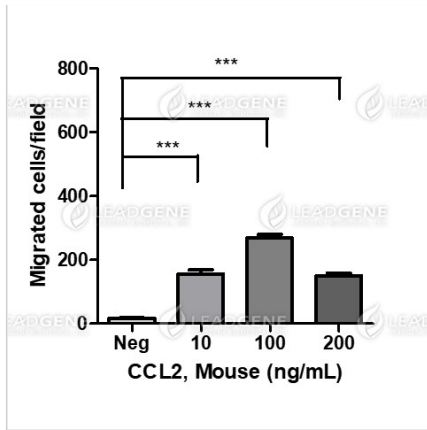
✉ bd@leadgene.com.tw

Innovation & Research Center

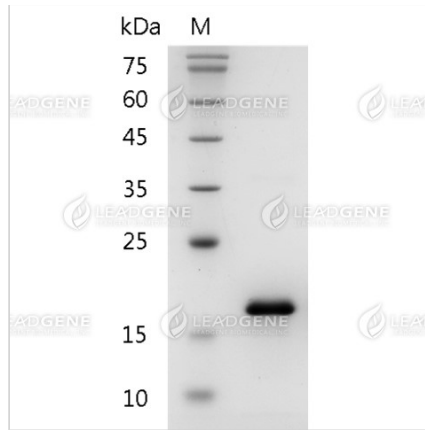
+886-2-27065528

CLD Center

+886-6-2536677



Activity analysis of recombinant Mouse CCL2, His Tag, E. coli. Measure by its ability to chemoattract human THP-1 cells using a concentration range of 10-100 ng/mL.



SDS-PAGE analysis of recombinant mouse CCL2.

Disclaimer : For Research Use or Further Manufacturing Only.