

## Human IGFBP7, His-SUMO Tag, HEK293

<b>Catalog Number</b>	LDG015PHM
<b>Package</b>	5 µg / 20 µg / 100 µg / Customized package

For full product information, images and publications, please visit [our website](#).



### Specifications

#### Species of Origin

Human

#### Expression system

HEK293

#### Affinity Tag

His-SUMO Tag (N-term)

#### Buffer

Lyophilized from a 0.2 µm filtered solution of PBS, pH 7.4.

#### Purity

>95% as determined by SDS-PAGE analysis.

#### Molecular weight

The protein has a calculated MW of 38.18 kDa. The protein migrates as 55 kDa under reducing condition (SDS-PAGE analysis).

#### Endotoxin level

<1 EU per 1 µg of the protein by the LAL method.

#### Form

Lyophilized

### Background

#### Tainan Headquarter

+886-6-2536677

bd@leadgene.com.tw

#### Innovation & Research Center

+886-2-27065528

#### CLD Center

+886-6-2536677

### Background

IGFBP7, also known as mac25, prostacyclin-stimulating factor (PSF), tumor adhesion factor (TAF), and angiomodulin (AGM), is a secreted protein that belongs to the insulin-like growth factor (IGF)-binding protein (IGFBP) family. In contrast to the other family members, IGFBP7 binds IGFs through the N-terminal domain with low affinity. IGFBP7 is expressed in various human tissues, including the brain, liver, pancreas, and skeletal muscle, and is secreted into circulation. IGF-BP7 modulates many biological functions, such as protein synthesis, proliferation, anti-apoptosis, and cell survival. Moreover, it has been reported that IGFBP7 promotes cardiac senescence through IGF-1R/IRS/AKT-dependent suppression of FOXO3a, inhibiting DNA repair, subsequently the leading to the progression of Heart failure. Human and mouse IGFBP7 are highly homologous, sharing 94% a.a. sequence identity.

### Uniprot ID

Q16270

### Synonyms

IGFBP-rP1, MAC25 protein, PGI2-stimulating factor, Prostacyclin-stimulating factor, Tumor-derived adhesion factor, TAF

### Sequence Note

Ser27-Leu282

## Instruction

### Reconstitution

It is recommended to reconstitute the lyophilized protein in sterile H<sub>2</sub>O to a concentration of 200 µg/mL and incubate the stock solution for at least 20 min to ensure sufficient re-dissolved.

### Shipping

The product is shipped with polar packs. Upon receipt, store it immediately at -20°C or lower for long term storage.

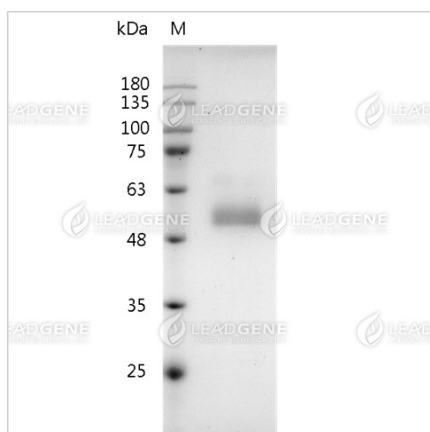
### Stability & Storage

This product is stable after storage at:

- -20°C for 12 months in lyophilized state from date of receipt.
- -20°C or -80°C for 1 month under sterile conditions after reconstitution.

Avoid repeated freeze/thaw cycles.

### Image



SDS-PAGE analysis of recombinant human IGFBP7.

**Disclaimer :** For Research Use or Further Manufacturing Only.