

## NiV Nucleocapsid Protein, His tag, E. coli

<b>Catalog Number</b>	LDG014PVE
<b>Package</b>	100 µg / Customized package

For full product information, images and publications, please visit [our website](#).



### Specifications

#### Species of Origin

Nipah Virus

#### Affinity Tag

His Tag (C-term)

#### Purity

>90% as determined by SDS-PAGE analysis.

#### Mycoplasma

Not detected

#### Expression system

Escherichia coli

#### Buffer

Lyophilized from a 0.2 µm filtered solution of PBS, pH 7.4.

#### Molecular weight

The protein has a calculated MW of 59 kDa.  
The protein migrates as 60 kDa under reducing condition (SDS-PAGE analysis).

#### Form

Lyophilized

### Background

#### Background

The NiV Nucleocapsid (N) protein is a crucial component of the Nipah virus (NiV), an emerging zoonotic pathogen. This protein encapsulates the viral RNA, forming the nucleocapsid core that is essential for virus replication and transcription. It also interacts with other viral proteins, playing a key role in the virus assembly and immune evasion, making it a target for antiviral strategies and vaccine development.

#### Synonyms

Nipah virus, Nucleoprotein

**Uniprot ID**

Q9IK92

**Sequence Note**

Met1-Val532

**Instruction**
**Reconstitution**

It is recommended to reconstitute the lyophilized protein in sterile H<sub>2</sub>O to a concentration not less than 200 µg/mL and incubate the stock solution for at least 20 min to ensure sufficient re-dissolved.

**Stability & Storage**

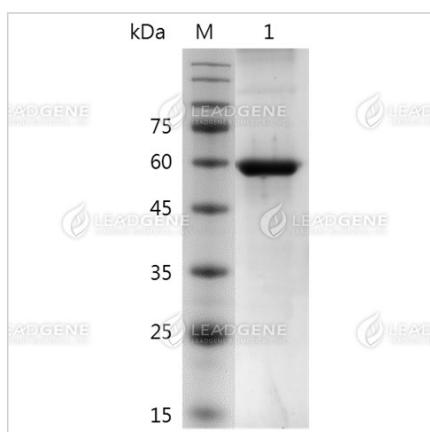
This product is stable after storage at:

- -20°C for 12 months in lyophilized state from date of receipt.
- -20°C or -80°C for 1 month under sterile conditions after reconstitution.

Avoid repeated freeze/thaw cycles.

**Shipping**

The product is shipped with polar packs. Upon receipt, store it immediately at -20°C or lower for long term storage.

**Image**


SDS-PAGE analysis of NiV  
Nucleocapsid Protein.

**Disclaimer :** For Research Use or Further Manufacturing Only.

**Tainan Headquarter**

+886-6-2536677

bd@leadgene.com.tw

**Innovation & Research Center**

+886-2-27065528

**CLD Center**

+886-6-2536677

**Tainan Headquarter**

☎ +886-6-2536677

✉ [bd@leadgene.com.tw](mailto:bd@leadgene.com.tw)

**Innovation & Research Center**

☎ +886-2-27065528

**CLD Center**

☎ +886-6-2536677