

## Anti-Human Red Blood Cell Antibody

<b>Catalog Number</b>	LDG0140YA
<b>Package</b>	per mg / Customized package

For full product information, images and publications, please visit [our website](#).



### Overview

#### Description

Human anti-Human Red Blood Cell Antibody recognize to Red Blood Cells (RBC)

#### Product Note

Recommended dilution factor:  
ELISA: 1:5000-20000

Note: Working dilution for specific application should be determined by the investigator to obtain the best conditions.

### Specifications

#### Clonality

Recombinant Human IgG

#### Isotype

IgG1

#### Clone Name

Human IgG

#### Reactivity

Human

#### Application

ELISA, CLIA, LFIA

#### Conjugation

Unconjugated

#### Concentration

2 mg/mL

#### Buffer

Phosphate Buffered Saline containing 0.1% ProClin 300, pH 7.4.

#### Tainan Headquarter

+886-6-2536677

bd@leadgene.com.tw

#### Innovation & Research Center

+886-2-27065528

#### CLD Center

+886-6-2536677

**Specificity**

Red Blood Cells (RBC)

**Form**

Liquid

**Instruction****Shipping**

The product is shipped with polar packs. Upon receipt, store it immediately at -20°C or lower for long term storage.



**Stability & Storage**

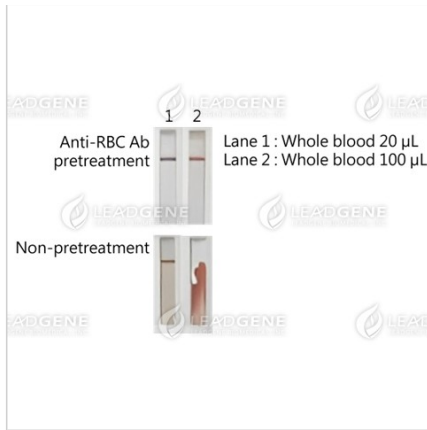
This product is stable after storage at:

- 2-8°C for 2 weeks under sterile conditions from date of receipt.
- -20°C or -80°C for 12 months under sterile conditions from date of receipt.

Avoid repeated freeze/thaw cycles.

Suggestion: Divide antibody into several vials. Keep only vials for usage at 2-8°C.

**Image****Tainan Headquarter** +886-6-2536677 [bd@leadgene.com.tw](mailto:bd@leadgene.com.tw)**Innovation & Research Center** +886-2-27065528**CLD Center** +886-6-2536677



Background interference observed in rapid tests run with different volumes of whole blood samples, comparing conditions with and without pretreatment using Anti-Human Red Blood Cell Antibody (Anti-RBC Ab). A significant reduction in background interference is observed in rapid test strips pretreated with Anti-Human Red Blood Cell Antibody when used to test whole blood samples, in contrast to non-pretreated strips.

**Disclaimer :** For Research Use or Further Manufacturing Only.