

Mouse CXCL10, His Tag, E. coli

Catalog Number LDG012PME

Package 5 µg / 20 µg / 100 µg / Customized package

For full product information, images and publications, please visit [our website](#).



Specifications

Species of Origin

Mouse

Affinity Tag

His Tag (N-term)

Purity

>98% as determined by SDS-PAGE analysis.

Activity

Measure by its ability to chemoattract human THP1 cells using a concentration range of 50-100 ng/mL.

Form

Lyophilized

Expression system

Escherichia coli

Buffer

Lyophilized from a 0.2 µm filtered solution of PBS, pH 7.4.

Molecular weight

The protein has a calculated MW of 9.47 kDa. The protein migrates as 7-11 kDa under reducing condition (SDS-PAGE analysis).

Endotoxin level

<0.1 EU per 1 µg of the protein by the LAL method.

Background

Tainan Headquarter

+886-6-2536677 +886-6-2531536

info@leadgene.com.tw

Taipei Office

+886-2-27065528

Background

C-X-C motif chemokine 10 (CXCL10) also named Interferon gamma-induced protein 10 (IP-10), which is a chemokine of the intercrine alpha family. CXCL10 is a 8.55 kDa protein containing 77 amino acid residues. CXCL10 is produced by the several cell types like monocytes and endothelial cells, which are responded for IFN γ . CXCL10 is a chemotaxis for T cells, NK cells and macrophages. CXCL10 also binds the CXCR3 that induces the cell migration and activation like T cells and dendritic cells.

Uniprot ID

#P17515

Synonyms

C-X-C motif chemokine 10, 10 kDa interferon gamma-induced protein, Gamma-IP10, IP-10, C7, Interferon-gamma induced protein CRG-2, Small-inducible cytokine B10

Sequence Note

Pro23-Pro98

Instruction

Reconstitution

It is recommended to reconstitute the lyophilized protein in sterile H₂O to a concentration not less than 200 μ g/mL and incubate the stock solution for at least 20 min to ensure sufficient re-dissolved.

Stability & Storage

This product is stable after storage at:

- -20°C for 12 months in lyophilized state from date of receipt.
- -20°C or -80°C for 1 month under sterile conditions after reconstitution.

Avoid repeated freeze/thaw cycles.

Shipping

The product is shipped with polar packs. Upon receipt, store it immediately at -20°C or lower for long term storage.

Image

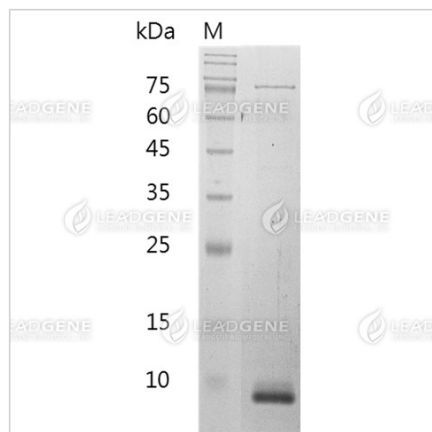
Tainan Headquarter

+886-6-2536677 +886-6-2531536

info@leadgene.com.tw

Taipei Office

+886-2-27065528



SDS-PAGE analysis of
recombinant mouse CXCL10.

Disclaimer : For Research Use or Further Manufacturing Only.

Tainan Headquarter

+886-6-2536677 +886-6-2531536

info@leadgene.com.tw

Taipei Office

+886-2-27065528