

Human IL-9, His Tag, E. coli

Catalog Number	LDG011PHE
Package	5 µg / 20 µg / 100 µg / Customized package

For full product information, images and publications, please visit [our website](#).



Specifications

Species of Origin

Human

Affinity Tag

His Tag (N-term)

Purity

>98% as determined by SDS-PAGE analysis.

Activity

Measure by its ability to induce proliferation in MO7e cells. The ED₅₀ for this effect is <0.25 ng/mL. The specific activity of recombinant human IL-9 is approximately >5 x10⁶ IU/ mg.

Form

Lyophilized

Expression system

Escherichia coli

Buffer

Lyophilized from a 0.2 µm filtered solution of PBS, pH 8.0.

Molecular weight

The protein has a calculated MW of 14.93 kDa. The protein migrates as 13-17 kDa under reducing condition (SDS-PAGE analysis).

Endotoxin level

<0.01 EU per 1 µg of the protein by the LAL method.

Background

Tainan Headquarter

+886-6-2536677

bd@leadgene.com.tw

Innovation & Research Center

+886-2-27065528

CLD Center

+886-6-2536677

Background

Interleukin 9 (IL-9) is a pleiotropic cytokine that had pleiotropic functions in the immune system, has a molecular mass of 14.5 kDa. The major source of IL-9 is T lymphocytes. It is secreted by CD4+ helper cells that acts as a regulator of a variety of hematopoietic cells.

Uniprot ID

#P15248

Synonyms

Cytokine P40, T-cell Growth Factors P40, Interleukin-7

Sequence Note

Gln19-Ile144

Instruction

Reconstitution

It is recommended to reconstitute the lyophilized protein in sterile H₂O to a concentration of 200 µg/mL and incubate the stock solution for at least 20 min to ensure sufficient re-dissolved.

Stability & Storage

This product is stable after storage at:

- -20°C for 12 months in lyophilized state from date of receipt.
- -20°C or -80°C for 2 weeks under sterile conditions after reconstitution.

Avoid repeated freeze/thaw cycles.

Shipping

The product is shipped with polar packs. Upon receipt, store it immediately at -20°C or lower for long term storage.

Image

Tainan Headquarter

+886-6-2536677

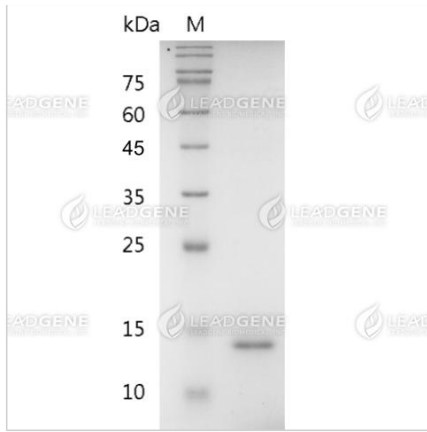
bd@leadgene.com.tw

Innovation & Research Center

+886-2-27065528

CLD Center

+886-6-2536677



SDS-PAGE analysis of recombinant human IL-9.

Disclaimer : For Research Use or Further Manufacturing Only.