

## Mouse CD16, His Tag, CHO

<b>Catalog Number</b>	LDG010PMM
<b>Package</b>	5 µg / 20 µg / 100 µg / Customized package

For full product information, images and publications, please visit [our website](#).



### Specifications

#### Species of Origin

Mouse

#### Affinity Tag

His Tag (C-term)

#### Purity

>95% as determined by SDS-PAGE analysis.

#### Endotoxin level

<0.1 EU per 1 µg of the protein by the LAL method.

#### Form

Lyophilized

#### Expression system

CHO

#### Buffer

Lyophilized from a 0.2 µm filtered solution of PBS, pH 7.4

#### Molecular weight

The protein has a calculated MW of 21.87 kDa.  
The protein migrates as 30-45 kDa under reducing condition (SDS-PAGE analysis).

#### Mycoplasma

Not detected

### Background

#### Tainan Headquarter

+886-6-2536677

bd@leadgene.com.tw

#### Innovation & Research Center

+886-2-27065528

#### CLD Center

+886-6-2536677

### Background

CD16, also known as Fc gamma receptor III (FcγRIII), is a transmembrane protein primarily found on the surface of natural killer (NK) cells, macrophages, and a subset of T cells. It plays a critical role in mediating antibody-dependent cellular cytotoxicity (ADCC) and phagocytosis. CD16 binds to the Fc portion of immunoglobulin G (IgG) antibodies, facilitating the recognition and destruction of target cells or pathogens coated with antibodies. This interaction activates downstream signaling pathways, triggering cytotoxic responses. CD16's involvement in immune surveillance and host defense highlights its significance in immune regulation and therapeutic strategies targeting ADCC.

### Uniprot ID

Q5D5I8

### Synonyms

Fc gamma receptor III

### Sequence Note

Met1-Thr215

## Instruction

### Reconstitution

It is recommended to reconstitute the lyophilized protein in sterile H<sub>2</sub>O to a concentration of 200 µg/mL and incubate the stock solution for at least 20 min to ensure sufficient re-dissolved.

### Stability & Storage

This product is stable after storage at:

- -20°C for 12 months in lyophilized state from date of receipt.
- -20°C or -80°C for 1 month under sterile conditions after reconstitution.

Avoid repeated freeze/thaw cycles.

### Shipping

The product is shipped with polar packs. Upon receipt, store it immediately at -20°C or lower for long term storage.

## Image

### Tainan Headquarter

+886-6-2536677

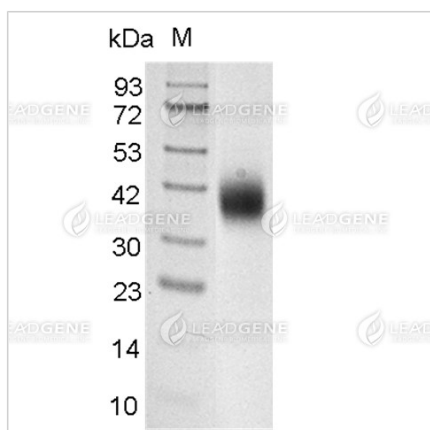
bd@leadgene.com.tw

### Innovation & Research Center

+886-2-27065528

### CLD Center

+886-6-2536677



SDS-PAGE analysis of recombinant mouse CD16.

**Disclaimer :** For Research Use or Further Manufacturing Only.