

Anti- β -amyloid Antibody [Clone 85-1]

Catalog Number	LDG0103YA
Package	100 μ g / Customized package

For full product information, images and publications, please visit [our website](#).



Overview

Description

Beta-amyloid ($A\beta$) is one of the intrinsically disordered proteins (IDPs) involved in Alzheimer's disease (AD) pathogenesis. This peptide derives from the sequential cleavage of a transmembrane glycoprotein, amyloid precursor protein (APP), by beta secretase and gamma secretase. The abnormal metabolism of APP result in excessive accumulation of $A\beta$, and triggers neurofibrillary tangles, oxidative stress, microglial activation, synaptic dysfunction, synaptic loss and the inflammatory response.

Product Note

Recommended dilution factor:

ELISA: 1:5000-20000

WB:1: 1000-5000

Note: Working dilution for specific application should be determined by the investigator to obtain the best conditions.

Specifications

Host

Mouse

Clonality

Monoclonal

Isotype

IgG2a

Clone Name

clone 85-1

Immunogen

Human beta-amyloid 1-42

Reactivity

Human

Tainan Headquarter

+886-6-2536677

bd@leadgene.com.tw

Innovation & Research Center

+886-2-27065528

CLD Center

+886-6-2536677

Application

ELISA, WB

Conjugation

Unconjugated

Concentration

1 mg/mL

Buffer

Phosphate Buffered Saline containing 0.01% thimerosal, pH 7.4.

Specificity

Beta Amyloid (1-42)

Form

Liquid

Instruction**Shipping**

The product is shipped with polar packs. Upon receipt, store it immediately at -20°C or lower for long term storage.



Stability & Storage

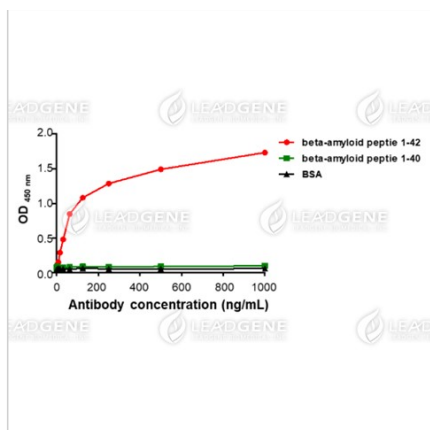
This product is stable after storage at:

- 2-8°C for 2 weeks under sterile conditions from date of receipt.
- -20°C or -80°C for 12 months under sterile conditions from date of receipt.

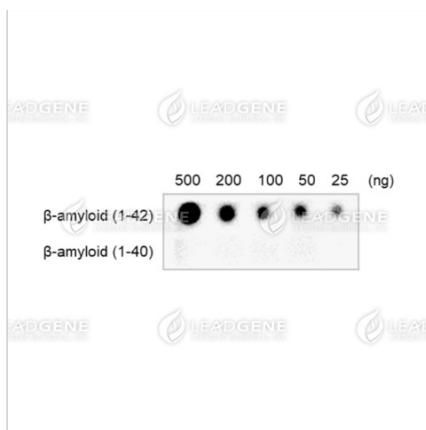
Avoid repeated freeze/thaw cycles.

Suggestion: Divide antibody into several vials. Keep only vials for usage at 2-8°C.

Image**Tainan Headquarter** +886-6-2536677 bd@leadgene.com.tw**Innovation & Research Center** +886-2-27065528**CLD Center** +886-6-2536677



ELISA titration of Anti-β-amyloid (1-42)
Antibody [clone 85-1]



Dot blot analysis of Anti-β-amyloid (1-42)
Antibody [clone 85-1].

Disclaimer : For Research Use or Further Manufacturing Only.