

Mouse CXCL7 (aa 40-113), His Tag, E. coli

Catalog Number	LDG009PME
Package	5 µg / 20 µg / 100 µg / Customized package

For full product information, images and publications, please visit [our website](#).



Specifications

Species of Origin

Mouse

Affinity Tag

His Tag (N-term)

Purity

>98% as determined by SDS-PAGE analysis.

Activity

Measure by its ability to chemoattract human THP1 cells using a concentration at 10-100 ng/mL.

Form

Lyophilized

Expression system

Escherichia coli

Buffer

Lyophilized from a 0.2 µm filtered solution of PBS, pH 7.4.

Molecular weight

The protein has a calculated MW of 8.93 kDa. The protein migrates below 11 kDa under reducing condition (SDS-PAGE analysis).

Endotoxin level

<0.1 EU per 1 µg of the protein by the LAL method.

Background

Tainan Headquarter

+886-6-2536677

bd@leadgene.com.tw

Innovation & Research Center

+886-2-27065528

CLD Center

+886-6-2536677

Background

C-X-C motif chemokine 7 (CXCL7) also named Pro-Platelet basic protein (PPBP), which is a chemokine of the intercrine alpha family. CXCL7 is a 8.2 kDa protein containing 74 amino acid residues. CXCL7 is expressed by the platelets, which are activated. During vascular injury, CXCL7 controls the glucose metabolism, mitogenesis and neutrophil recruitment by the interaction with CXCR2.

Uniprot ID

#NP_076274

Synonyms

Chemokine subfamily B Cys-X-Cys, Platelet basic protein, Pro-platelet basic protein, Thymus chemokine 1

Sequence Note

Lys40-Tyr113

Instruction

Reconstitution

It is recommended to reconstitute the lyophilized protein in sterile H₂O to a concentration of 200 µg/mL and incubate the stock solution for at least 20 min to ensure sufficient re-dissolved.

Stability & Storage

This product is stable after storage at:

- -20°C for 12 months in lyophilized state from date of receipt.
- -20°C or -80°C for 1 month under sterile conditions after reconstitution.

Avoid repeated freeze/thaw cycles.

Shipping

The product is shipped with polar packs. Upon receipt, store it immediately at -20°C or lower for long term storage.

Image

Tainan Headquarter

+886-6-2536677

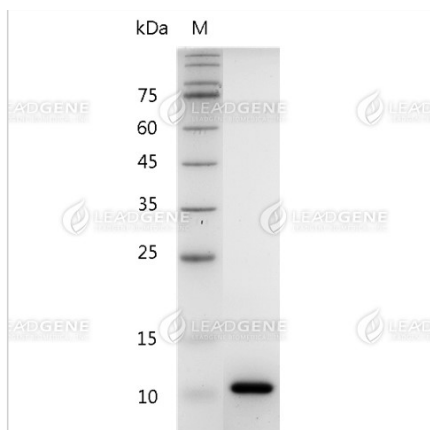
✉ bd@leadgene.com.tw

Innovation & Research Center

+886-2-27065528

CLD Center

+886-6-2536677



SDS-PAGE analysis of recombinant mouse CXCL7 (aa 40-113).

Disclaimer : For Research Use or Further Manufacturing Only.