

## Human ACE2, Fc Tag, HEK293

<b>Catalog Number</b>	LDG009PHM
<b>Package</b>	5 µg / 20 µg / 100 µg / Customized package

“ Publications ( 2 )

For full product information, images and publications, please visit [our website](#).



### Specifications

#### Species of Origin

Human

#### Expression system

HEK293

#### Affinity Tag

Mouse IgG2b Fc Tag (C-term)

#### Buffer

Lyophilized from a 0.2 µm filtered solution of PBS, pH 7.4.

#### Purity

>98% as determined by SDS-PAGE analysis.

#### Molecular weight

The protein has a calculated MW of 109.67 kDa.  
The protein migrates as 120-170 kDa under reducing condition (SDS-PAGE analysis).

#### Endotoxin level

<0.1 EU per 1 µg of the protein by the LAL method.

#### Form

Lyophilized

### Background

#### Tainan Headquarter

+886-6-2536677

bd@leadgene.com.tw

#### Innovation & Research Center

+886-2-27065528

#### CLD Center

+886-6-2536677

### Background

Angiotensin-Converting Enzyme 2 (ACE2) has a function as an enzyme that hydrolysis the angiotensin II into angiotensin which do the effect of anti-oxidation and anti-inflammatory in cardiovascular system through the inhibition of MAPK pathway and TGF  $\beta$  signaling pathway. ACE2 is highly expression in intestines, kidney, and heart. It is also found high expression in patients with lung cancer.

### Uniprot ID

Q9BYF1

### Synonyms

Angiotensin-converting enzyme 2, Angiotensin-converting enzyme homolog, ACEH, Angiotensin-converting enzyme-related carboxypeptidase, ACE-related carboxypeptidase, Metalloprotease MPROT15

### Sequence Note

Gln18-Ser740

## Instruction

### Reconstitution

It is recommended to reconstitute the lyophilized protein in sterile H<sub>2</sub>O to a concentration of 200  $\mu$ g/mL and incubate the stock solution for at least 20 min to ensure sufficient re-dissolved.

### Stability & Storage

This product is stable after storage at:

- -20°C for 12 months in lyophilized state from date of receipt.
- -20°C or -80°C for 1 month under sterile conditions after reconstitution.

Avoid repeated freeze/thaw cycles.

### Shipping

The product is shipped with polar packs. Upon receipt, store it immediately at -20°C or lower for long term storage.

## Image

### Tainan Headquarter

+886-6-2536677

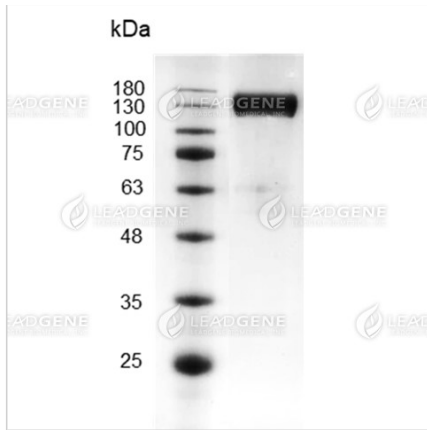
✉ [bd@leadgene.com.tw](mailto:bd@leadgene.com.tw)

### Innovation & Research Center

+886-2-27065528

### CLD Center

+886-6-2536677



SDS-PAGE analysis of recombinant human ACE2.

**Disclaimer :** For Research Use or Further Manufacturing Only.