

## Anti-SARS-CoV-2 NP Antibody [Clone 109-5]

<b>Catalog Number</b>	LDG0084YA
<b>Package</b>	100 µg / Customized package

For full product information, images and publications, please visit [our website](#).



### Overview

#### Description

Mouse anti-SARS-CoV & CoV-2 NP mAb recognize SARS Coronavirus Nucleocapsid protein (NP). Coronavirus NP localize to the cytoplasm and the nucleolus in both Virus-like particle (VLP) infected primary cells and in cells transfected with NP plasmid. NP has abundant expression in coronavirus and is a highly immunogenic phosphoprotein. NP is also conserved in sequence. Due to these characteristics above, the NP is an ideal marker for diagnosis.

#### Product Note

Recommended dilution factor:

ELISA: 1:5000-20000

WB:1: 1000-5000

IFA:1: 500-1000

Note: Working dilution for specific application should be determined by the investigator to obtain the best conditions.

### Specifications

#### Host

Mouse

#### Clonality

Monoclonal

#### Isotype

IgG1

#### Clone Name

clone 109-5

#### Immunogen

Nucleocapsid protein (NP)

#### Reactivity

SARS-CoV & CoV-2

#### Tainan Headquarter

+886-6-2536677

bd@leadgene.com.tw

#### Innovation & Research Center

+886-2-27065528

#### CLD Center

+886-6-2536677

**Application**

ELISA, WB, IFA

**Conjugation**

Unconjugated

**Concentration**

1 mg/mL

**Buffer**

Phosphate Buffered Saline containing 0.03% ProClin 300, pH 7.4.

**Specificity**

Nucleocapsid protein

**Form**

Liquid

**Instruction****Shipping**

The product is shipped with polar packs. Upon receipt, store it immediately at -20°C or lower for long term storage.

**Stability & Storage**

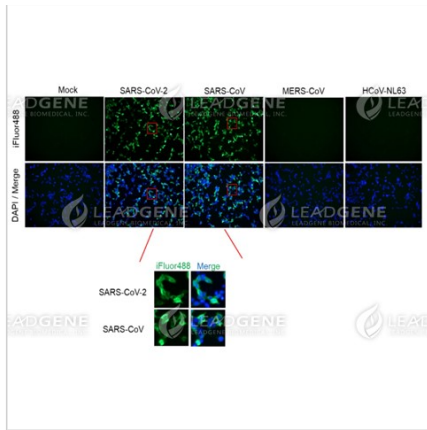
This product is stable after storage at:

- 2-8°C for 2 weeks under sterile conditions from date of receipt.
- -20°C or -80°C for 12 months under sterile conditions from date of receipt.

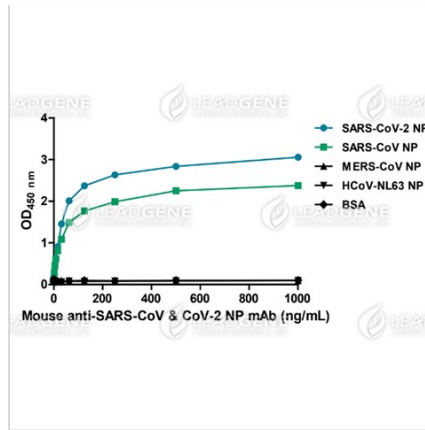
Avoid repeated freeze/thaw cycles.

Suggestion: Divide antibody into several vials. Keep only vials for usage at 2-8°C.

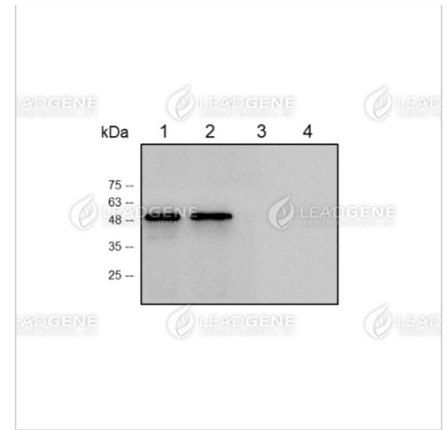
**Image****Tainan Headquarter** +886-6-2536677 [bd@leadgene.com.tw](mailto:bd@leadgene.com.tw)**Innovation & Research Center** +886-2-27065528**CLD Center** +886-6-2536677



Immunofluorescence analysis of  
Mouse anti-SARS-CoV & CoV-2 NP  
mAb, clone 109-5 (1:500)



ELISA titration of Mouse anti-SARS-  
CoV & CoV-2 NP mAb, clone 109-5



Western blotting analysis of Mouse  
anti-SARS-CoV & CoV-2 NP mAb,  
clone 109-5 (1:1000)

Lane 1 : SARS-CoV-2 NP

Lane 2 : SARS-CoV NP

Lane 3 : MERS-CoV NP

Lane 4 : HCoV-NL63 NP

**Disclaimer** : For Research Use or Further Manufacturing Only.