

## Anti-SARS-CoV & CoV-2 NP Antibody Set

<b>Catalog Number</b>	LDG0079YA
<b>Package</b>	20 µg / Customized package

For full product information, images and publications, please visit [our website](#).



### Overview

#### Description

Human anti-SARS-CoV & CoV-2 NP antibody recognize human SARS Coronavirus Nucleocapsid protein (NP). Coronavirus NP localize to the cytoplasm and the nucleolus in both Virus-like particle (VLP) infected primary cells and in cells transfected with NP plasmid. NP has abundant expression in coronavirus and is a highly immunogenic phosphoprotein. NP is also conserved in sequence. Due to these characteristic above, the NP is an ideal marker for diagnosis.

#### Product Note

Recommended dilution factor:

ELISA: 1:5000-20000

WB: Assay dependent

IFA: Assay dependent

FACS: Assay dependent

Note: Working dilution for specific application should be determined by the investigator to obtain the best conditions.

### Specifications

#### Clonality

Recombinant Human IgG

#### Isotype

IgG, IgA, IgM

#### Reactivity

SARS-CoV & CoV-2

#### Application

ELISA, WB, IFA

#### Conjugation

Unconjugated

#### Concentration

1 mg/mL

#### Tainan Headquarter

+886-6-2536677

bd@leadgene.com.tw

#### Innovation & Research Center

+886-2-27065528

#### CLD Center

+886-6-2536677

**Buffer**

Phosphate Buffered Saline, pH 7.4.

**Specificity**

Nucleocapsid protein

**Form**

Liquid

**Instruction**
**Shipping**

The product is shipped with polar packs. Upon receipt, store it immediately at -20°C or lower for long term storage.

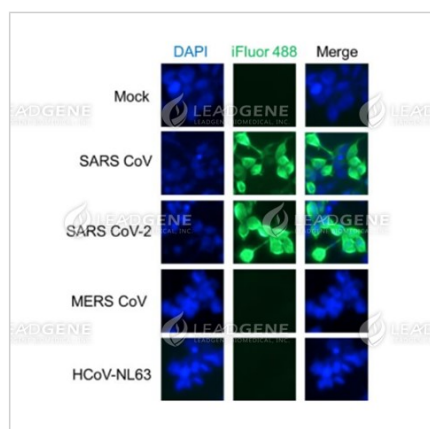
**Stability & Storage**

This product is stable after storage at:

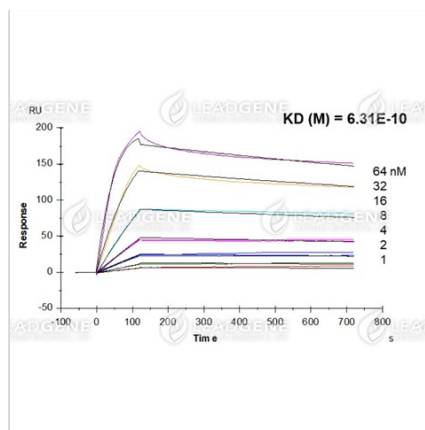
- 2-8°C for 2 weeks under sterile conditions from date of receipt.
- -20°C or -80°C for 12 months under sterile conditions from date of receipt.

Avoid repeated freeze/thaw cycles.

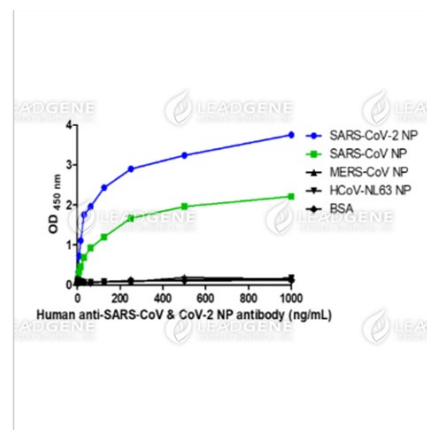
Suggestion: Divide antibody into several vials. Keep only vials for usage at 2-8°C.

**Image**


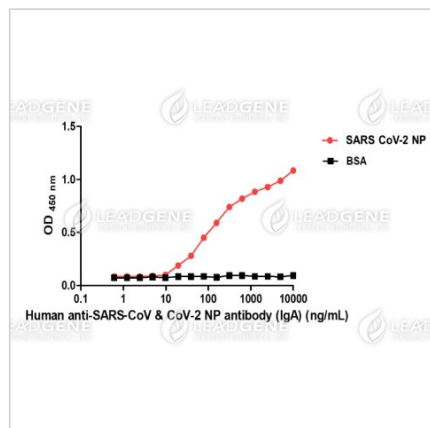
Immunofluorescence analysis of  
 Human anti-SARS-CoV & CoV-2 NP  
 Antibody (IgG) (1:500)



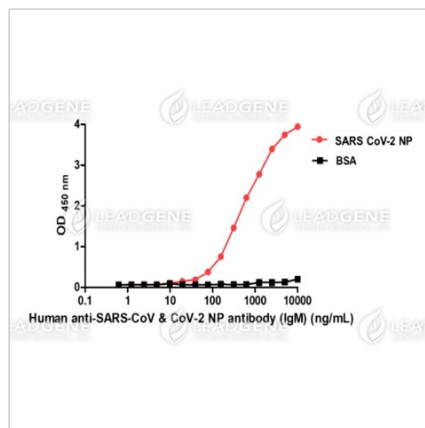
Multi-cycle kinetic analysis of Human anti-SARS CoV & CoV-2 NP Antibody (IgG) to Human SARS CoV-2 Nucleocapsid protein by using Biacore T200.



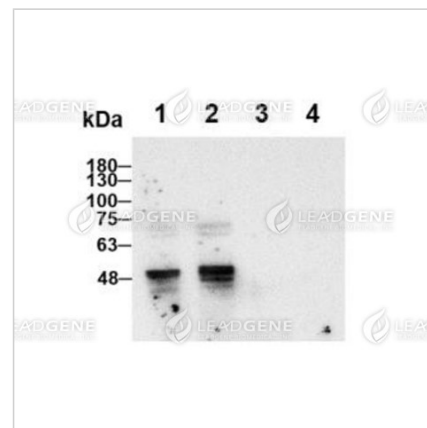
ELISA titration of Human anti-SARS-CoV & CoV-2 NP Antibody (IgG)



ELISA titration of Human anti-SARS-CoV & CoV-2 NP Antibody (IgA)



ELISA titration of Human anti-SARS-CoV & CoV-2 NP Antibody (IgM)



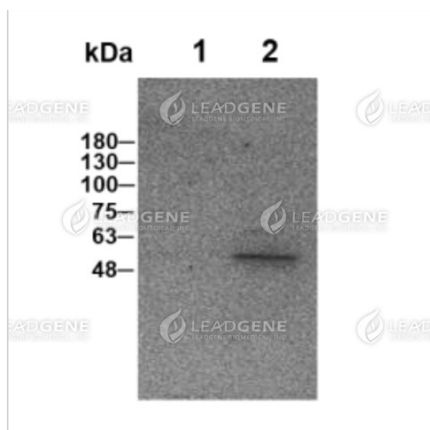
Western blotting analysis of Human anti-SARS-CoV & CoV-2 NP antibody (IgG) (1:1000)

Lane 1 : SARS CoV-2 NP

Lane 2 : SARS CoV NP

Lane 3 : MERS COV NP

Lane 4 : HCoV-NL63 NP



Western blotting analysis of Human  
anti-SARS-CoV & CoV-2 NP antibody  
(IgG) (1:1000)

Lane 1 : HEK293 lysate

Lane 2 : SARS CoV-2 VLP

**Disclaimer** : For Research Use or Further Manufacturing Only.