

## Swine CCL2, His Tag, E. coli

Catalog Number	LDG006PSE
Package	5 µg / 20 µg / 100 µg / Customized package

For full product information, images and publications, please visit [our website](#).



### Specifications

#### Species of Origin

Swine

#### Affinity Tag

His Tag (N-term)

#### Purity

>98% as determined by SDS-PAGE analysis.

#### Endotoxin level

<0.1 EU per 1 µg of the protein by the LAL method.

#### Expression system

Escherichia coli

#### Buffer

Lyophilized from a 0.2 µm filtered solution of PBS, pH 7.4.

#### Molecular weight

The protein has a calculated MW of 9.42 kDa.  
The protein migrates as 11-17 kDa under reducing condition (SDS-PAGE analysis).

#### Form

Lyophilized

### Background

#### Tainan Headquarter

+886-6-2536677

bd@leadgene.com.tw

#### Innovation & Research Center

+886-2-27065528

#### CLD Center

+886-6-2536677

### Background

CCL2 (Chemokine ligand 2) is also named for the MCP1 (monocyte chemoattractant protein 1) which is a cytokine of CC chemokine family. CCL2 plays an important role in the recruitment of T cell and monocyte during inflammation, which is induced by the infection. CCL2 is secreted from the osteoblasts which is under the mediation of the NF- $\kappa$ B pathway. In cancer therapy, CCL2 plays an important role in increasing the anti-tumor capability of monocytes and neutrophils.

### Uniprot ID

#P42831

### Synonyms

C-C motif chemokine 2, Monocyte chemoattractant protein 1, Monocyte chemotactic protein 1, MCP-1, Small-inducible cytokine A2

### Sequence Note

Gln24-Pro99

## Instruction

### Reconstitution

It is recommended to reconstitute the lyophilized protein in sterile H<sub>2</sub>O to a concentration of 200  $\mu$ g/mL and incubate the stock solution for at least 20 min to ensure sufficient re-dissolved.

### Stability & Storage

This product is stable after storage at:

- -20°C for 12 months in lyophilized state from date of receipt.
- -20°C or -80°C for 1 month under sterile conditions after reconstitution.

Avoid repeated freeze/thaw cycles.

### Shipping

The product is shipped with polar packs. Upon receipt, store it immediately at -20°C or lower for long term storage.

## Image

### Tainan Headquarter

+886-6-2536677

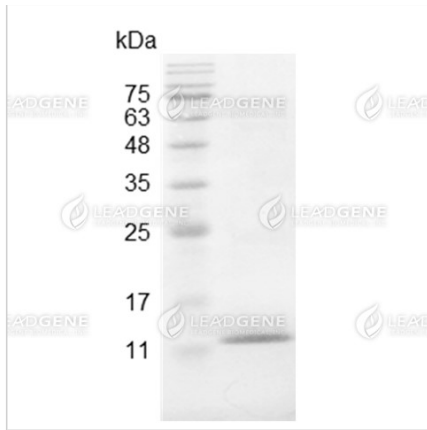
bd@leadgene.com.tw

### Innovation & Research Center

+886-2-27065528

### CLD Center

+886-6-2536677



SDS-PAGE analysis of recombinant swine CCL2.

**Disclaimer :** For Research Use or Further Manufacturing Only.