

## Mouse Napsin A, His Tag, CHO

<b>Catalog Number</b>	LDG006PMM
<b>Package</b>	5 µg / 20 µg / 100 µg / Customized package

For full product information, images and publications, please visit [our website](#).



### Specifications

#### Species of Origin

Mouse

#### Expression system

CHO

#### Affinity Tag

His Tag (C-term)

#### Buffer

Lyophilized from a 0.2 µm filtered solution of PBS, pH 7.4

#### Purity

>95% as determined by SDS-PAGE analysis.

#### Molecular weight

The protein has a calculated MW of 44.64 kDa.  
The protein migrates as 40-70 kDa under reducing condition (SDS-PAGE analysis).

#### Endotoxin level

<0.1 EU per 1 µg of the protein by the LAL method.

#### Mycoplasma

Not detected

#### Form

Lyophilized

### Background

#### Tainan Headquarter

+886-6-2536677

bd@leadgene.com.tw

#### Innovation & Research Center

+886-2-27065528

#### CLD Center

+886-6-2536677

### Background

Napsin A is a biomarker protein primarily found in the human lung and kidney tissues. It belongs to the aspartic proteinase family and plays a crucial role in the maturation of pulmonary surfactant proteins, aiding in respiratory function. Elevated levels of Napsin A have been linked to certain lung diseases, including adenocarcinoma, making it a valuable diagnostic marker in pathology. Its specificity to lung tissue makes it a promising target for immunohistochemical staining in the diagnosis and classification of lung cancer subtypes. Napsin A's significance in both normal physiology and disease pathology underscores its importance in medical research and clinical practice.

### Uniprot ID

O09043

### Synonyms

KDAP-1, Kidney-derived aspartic protease-like protein (KAP)

### Sequence Note

Met1-Gly419

## Instruction

### Reconstitution

It is recommended to reconstitute the lyophilized protein in sterile H<sub>2</sub>O to a concentration of 200 µg/mL and incubate the stock solution for at least 20 min to ensure sufficient re-dissolved.

### Stability & Storage

This product is stable after storage at:

- -20°C for 12 months in lyophilized state from date of receipt.
- -20°C or -80°C for 1 month under sterile conditions after reconstitution.

Avoid repeated freeze/thaw cycles.

### Shipping

The product is shipped with polar packs. Upon receipt, store it immediately at -20°C or lower for long term storage.

## Image

### Tainan Headquarter

+886-6-2536677

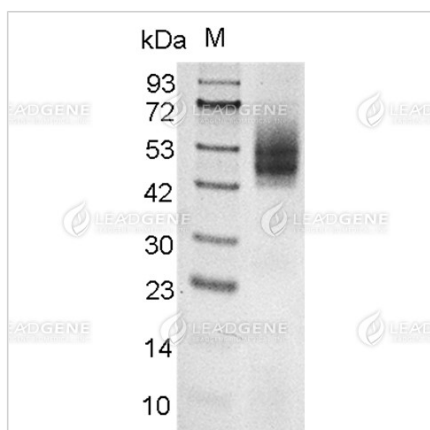
bd@leadgene.com.tw

### Innovation & Research Center

+886-2-27065528

### CLD Center

+886-6-2536677



SDS-PAGE analysis of recombinant mouse Napsin A.

**Disclaimer :** For Research Use or Further Manufacturing Only.