

## Mouse CTLA-4, His Tag, HEK293

Catalog Number	LDG005PMM
Package	5 µg / 20 µg / 100 µg / Customized package

For full product information, images and publications, please visit [our website](#).



### Specifications

#### Species of Origin

Mouse

#### Expression system

HEK293

#### Affinity Tag

His Tag (C-term)

#### Buffer

Lyophilized from a 0.2 µm filtered solution of PBS, pH 7.4

#### Purity

>90% as determined by SDS-PAGE analysis.

#### Molecular weight

The protein has a calculated MW of 14.62 kDa.  
The protein migrates as 20-25 kDa under reducing condition (SDS-PAGE analysis).

#### Endotoxin level

<0.1 EU per 1 µg of the protein by the LAL method.

#### Form

Lyophilized

### Background

#### Tainan Headquarter

+886-6-2536677

bd@leadgene.com.tw

#### Innovation & Research Center

+886-2-27065528

#### CLD Center

+886-6-2536677

### Background

CTLA-4 is a protein belonging to the immunoglobulin superfamily and the CD28 receptor family. It interacts with CD80 (B7-1) and CD86 (B7-2) to transmit inhibitory signals to T cells, in contrast to CD28, which sends stimulatory signals. This receptor is also found within regulatory T cells, where it plays a vital role in their functions. CTLA-4 is a key regulator of T cell activation, making it an appealing candidate for autoimmune disease therapy and cancer immunotherapy. Recent evidence further highlights its importance in the function and balance of regulatory T cells (Treg).

### Uniprot ID

NP\_033973

### Synonyms

Cytotoxic T-lymphocyte-associated antigen 4, CD152

### Sequence Note

Met1-Phe162

## Instruction

### Reconstitution

It is recommended to reconstitute the lyophilized protein in sterile H<sub>2</sub>O to a concentration of 200 µg/mL and incubate the stock solution for at least 20 min to ensure sufficient re-dissolved.

### Stability & Storage

This product is stable after storage at:

- -20°C for 12 months in lyophilized state from date of receipt.
- -20°C or -80°C for 1 month under sterile conditions after reconstitution.

Avoid repeated freeze/thaw cycles.

### Shipping

The product is shipped with polar packs. Upon receipt, store it immediately at -20°C or lower for long term storage.

## Image

### Tainan Headquarter

+886-6-2536677

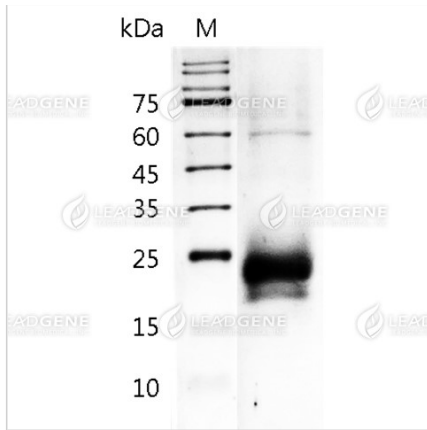
✉ [bd@leadgene.com.tw](mailto:bd@leadgene.com.tw)

### Innovation & Research Center

+886-2-27065528

### CLD Center

+886-6-2536677



SDS-PAGE analysis of recombinant mouse CTLA-4 protein.

**Disclaimer :** For Research Use or Further Manufacturing Only.