

## LeadGMP® Human IL-4 Protein, His Tag, E. coli

**Catalog Number** LDG005PHE-GMP

**Package** 100 µg / 1 mg / Customized package

For full product information, images and publications, please visit [our website](#).



### Specifications

#### Species of Origin

Human

#### Affinity Tag

His Tag (C-term)

#### Purity

>98% as determined by SDS-PAGE analysis.

#### Activity

Measure by its ability to induce TF-1 cells proliferation. The ED<sub>50</sub> for this effect is < 0.2 ng/mL. The specific activity of recombinant human IL-4 is approximately > 1 x 10<sup>7</sup> IU/mg, which is calibrated against the human IL-4 WHO International Standard (NIBSC code: 88/656).

#### Mycoplasma

Not detected

#### Expression system

Escherichia coli

#### Buffer

Lyophilized from a 0.2 µm filtered solution of PBS, pH 8.0.

#### Molecular weight

The protein has a calculated MW of 15.9 kDa. The protein migrates as 12 kDa under reducing condition (SDS-PAGE analysis).

#### Endotoxin level

<0.05 EU per 1 µg of the protein by the LAL method.

#### Form

Lyophilized

### Background

#### Tainan Headquarter

+886-6-2536677

bd@leadgene.com.tw

#### Innovation & Research Center

+886-2-27065528

#### CLD Center

+886-6-2536677

### Background

Interleukin-4 (IL-4) is a key cytokine produced by activated T cells, mast cells, basophils, neutrophils and eosinophils. IL-4 is critical for the development of Th2-mediated responses, which is related to allergy and asthma. It can also regulate B cell responses, including survival, cell proliferation and gene expression. IL-4 also plays fundamental role for B-cell stimulation, including induction of the IgE isotype switch.

### Uniprot ID

P05112

### Synonyms

Interleukin-4, B-cell stimulatory factor 1 , BSF-1, Binetrakin, Lymphocyte stimulatory factor 1, Pitrakinra

### Sequence Note

His25-Ser153

## Instruction

### Reconstitution

It is recommended to reconstitute the lyophilized protein in sterile H<sub>2</sub>O to a concentration not less than 0.5 mg/mL and incubate the stock solution for at least 20 min to ensure sufficient re-dissolved.

### Shipping

The product is shipped with polar packs. Upon receipt, store it immediately at -20°C or lower for long term storage.

### Tainan Headquarter

+886-6-2536677

✉ [bd@leadgene.com.tw](mailto:bd@leadgene.com.tw)

### Innovation & Research Center

+886-2-27065528

### CLD Center

+886-6-2536677

### Stability & Storage

This product is stable after storage at:

- -20°C for 12 months in lyophilized state from date of receipt.
- -20°C or -80°C for 1 month under sterile conditions after reconstitution.

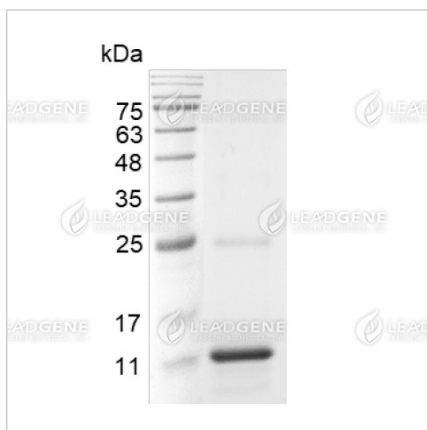
Avoid repeated freeze/thaw cycles.

### Manufacturing specifications

LeadGMP® recombinant proteins are manufactured in ISO 13485:2016 and GMP certified facility. The processes include:

- Animal-free reagent and laboratory
- Manufactured and tested under GMP guideline
- Testing and traceability of raw material
- Records of the maintenance and equipment calibration
- Personnel training records
- Batch-to-batch consistency
- Documentation of QA control and process changes
- Manufactured and tested under an ISO 13485:2016 certified quality management system
- Stability monitor of product shelf-life

## Image



SDS-PAGE analysis of LeadGMP® IL-4, Human

**Disclaimer :** For Research Use or Further Manufacturing Only.

**Tainan Headquarter**

+886-6-2536677

bd@leadgene.com.tw

**Innovation & Research Center**

+886-2-27065528

**CLD Center**

+886-6-2536677