

Anti-PGA5 Antibody [Clone 85-5]

| | |
|----------------|-----------------------------|
| Catalog Number | LDG0054YA |
| Package | 100 µg / Customized package |

For full product information, images and publications, please visit [our website](#).



Overview

Description

Pepsinogens are members of the peptidases that are secreted by gastric chief cells and are inactive polypeptide proenzymes known as zymogens. They are converted by gastric acid to active pepsins, which are involved in the digestion of proteins. Pepsinogen A5 (PGA5), an isozymogen of pepsinogen A, is the predominant endopeptidase in the gastric acid and is associated with atrophic gastritis and gastritis.

Product Note

Recommended dilution factor:

ELISA: 1:5000-20000

WB: 1:1000-5000

IFA: 1:100-1000

FACS: Assay dependent

Note: Working dilution for specific application should be determined by the investigator to obtain the best conditions.

Specifications

Host

Mouse

Clonality

Monoclonal

Isotype

IgG1

Clone Name

clone 85-5

Immunogen

The immunogen information used to generate this antibody is proprietary.

Reactivity

Human

Tainan Headquarter

+886-6-2536677

bd@leadgene.com.tw

Innovation & Research Center

+886-2-27065528

CLD Center

+886-6-2536677

Application

ELISA, WB, IFA, FACS

Concentration

1 mg/mL

Specificity

PGA5

Conjugation

Unconjugated

Buffer

Phosphate Buffered Saline containing 0.03% ProClin 300, pH 7.4.

Form

Liquid

Instruction**Shipping**

The product is shipped with polar packs. Upon receipt, store it immediately at -20°C or lower for long term storage.



Stability & Storage

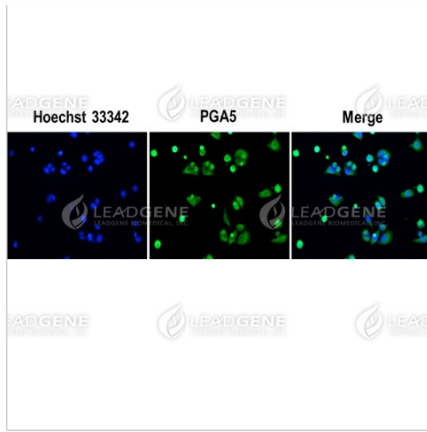
This product is stable after storage at:

- 2-8°C for 2 weeks under sterile conditions from date of receipt.
- -20°C or -80°C for 12 months under sterile conditions from date of receipt.

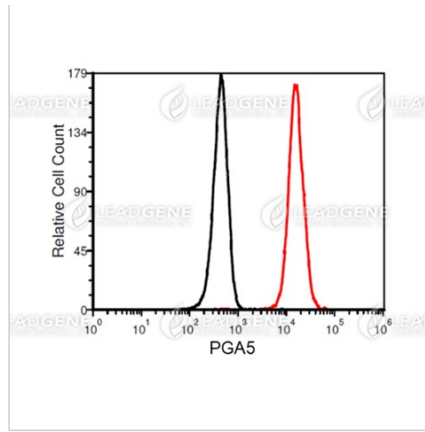
Avoid repeated freeze/thaw cycles.

Suggestion: Divide antibody into several vials. Keep only vials for usage at 2-8°C.

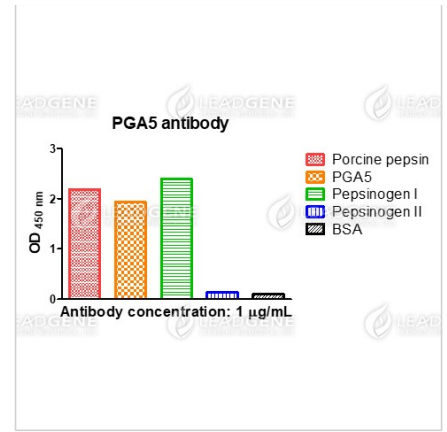
Image**Tainan Headquarter** +886-6-2536677 bd@leadgene.com.tw**Innovation & Research Center** +886-2-27065528**CLD Center** +886-6-2536677



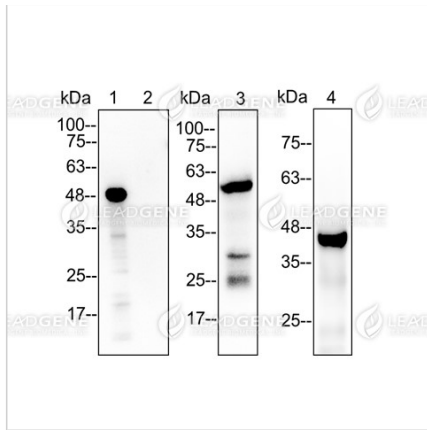
Immunofluorescence analysis of Anti-PGA5 Antibody [Clone 85-5]
 HeLa cells were fixed in 4% PFA, permeabilized with PBS containing 0.1% Triton X-100. Cells were stained with mouse anti-PGA5 monoclonal antibody (1:100) followed by secondary antibodies (goat anti-Mouse IgG-iFluor 488, 1:200, green) and cell nuclei were stained with Hoechst 33342 (Blue).



FACS analysis of Anti-PGA5 Antibody [Clone 85-5]
 K562 cells were stained with mouse anti-PGA5 monoclonal antibody at 2 µg/ml (red) and without antibody control (black).



ELISA analysis of Anti-PGA5 Antibody [Clone 85-5]
 The specificity of anti-PGA5 antibody recognize recombinant proteins in ELISA. Red: Porcine pepsin; Orange: PGA5; Green: Pepsinogen I; Blue: Pepsinogen II; Black: BSA (negative control).



Western blotting analysis of Anti-PGA5 Antibody [Clone 85-5]
 Recombinant proteins and mouse stomach lysates were stained with mouse anti-PGA5 monoclonal antibody at 1:5000 dilution. Lane 1: Purified human pepsinogen I (25 ng). Lane 2: Purified human pepsinogen II (25 ng). Lane 3: Mouse stomach lysate (30 µg). Lane 4: Human gastric juice (10 µL).

Disclaimer : For Research Use or Further Manufacturing Only.