

Anti-HBV PreS2 Antibody [Clone S201]

Catalog Number	LDG0051YA
Package	100 µg / Customized package

For full product information, images and publications, please visit [our website](#).



Overview

Description

Hepatitis B virus (HBV) is a hepadnavirus which has a circular genome composed of partially double-stranded DNA. The HBV surface protein antigens (HBsAg) are comprised of large (LHBs), middle (MHBs) and small (SHBs, also called major) protein. LHBs contains preS1, prS2, and small protein. MHBs does not include preS1 protein and SHBs dose not include preS1 and preS2 proteins. HbsAg and its antibodies have been developed as biomarkers to monitor infection stage. Expression of preS1 and preS2 in tissue or serum are also important to reveal the mechanism of HBV infection.

Product Note

Recommended dilution factor:

ELISA: 1:5000-20000

WB: 1:1000-5000

IFA: 1:500-1000

Note: Working dilution for specific application should be determined by the investigator to obtain the best conditions.

Specifications

Host

Mouse

Clonality

Monoclonal

Isotype

IgG1

Clone Name

clone S201

Immunogen

Hepatitis B virus preS2 protein

Reactivity

Hepatitis B virus

Tainan Headquarter

+886-6-2536677

bd@leadgene.com.tw

Innovation & Research Center

+886-2-27065528

CLD Center

+886-6-2536677

Application

ELISA, WB, IFA

Conjugation

Unconjugated

Concentration

1 mg/mL

Buffer

Phosphate Buffered Saline containing 0.03% ProClin 300, pH 7.4.

Specificity

preS2 protein

Form

Liquid

Instruction**Shipping**

The product is shipped with polar packs. Upon receipt, store it immediately at -20°C or lower for long term storage.

Stability & Storage

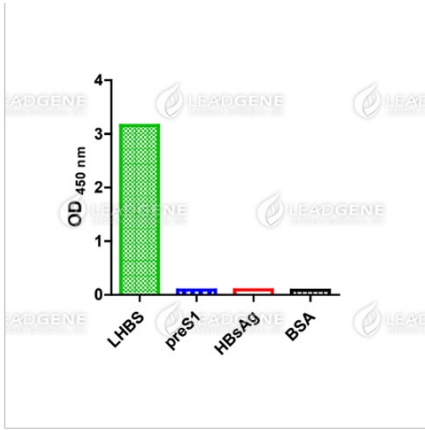
This product is stable after storage at:

- 2-8°C for 2 weeks under sterile conditions from date of receipt.
- -20°C or -80°C for 12 months under sterile conditions from date of receipt.

Avoid repeated freeze/thaw cycles.

Suggestion: Divide antibody into several vials. Keep only vials for usage at 2-8°C.

Image**Tainan Headquarter** +886-6-2536677 bd@leadgene.com.tw**Innovation & Research Center** +886-2-27065528**CLD Center** +886-6-2536677



Direct ELISA of HBV preS2 antibody,
clone S201

Disclaimer : For Research Use or Further Manufacturing Only.