

Canine CTLA-4 Protein, His Tag, HEK293

Catalog Number	LDG004POM
Package	Customized package / 100 µg

For full product information, images and publications, please visit [our website](#).



Overview

Description

CTLA-4 is a protein belonging to the immunoglobulin superfamily and the CD28 receptor family. It interacts with CD80 (B7-1) and CD86 (B7-2) to transmit inhibitory signals to T cells, in contrast to CD28, which sends stimulatory signals. This receptor is also found within regulatory T cells, where it plays a vital role in their functions. CTLA-4 is a key regulator of T cell activation, making it an appealing candidate for autoimmune disease therapy and cancer immunotherapy. Recent evidence further highlights its importance in the function and balance of regulatory T cells (Treg).

Specifications

Species of Origin

Canine

Expression system

HEK293

Affinity Tag

His Tag (C-term)

Buffer

Lyophilized from a 0.2 µm filtered solution of PBS, pH 7.4.

Purity

>90% as determined by SDS-PAGE analysis.

Molecular weight

The protein has a calculated MW of 14 kDa.
The protein migrates as 18-23 kDa under reducing condition (SDS-PAGE analysis).

Endotoxin level

<0.1 EU per 1 µg of the protein by the LAL method.

Form

Lyophilized

Background

Tainan Headquarter

+886-6-2536677

bd@leadgene.com.tw

Innovation & Research Center

+886-2-27065528

CLD Center

+886-6-2536677

Synonyms

CD152

Sequence Note

Lys36-Asp161

Uniprot ID

NCBI Reference Sequence: NP_001003106.1

Instruction**Reconstitution**

It is recommended to reconstitute the lyophilized protein in sterile H₂O to a concentration of 200 µg/mL and incubate the stock solution for at least 20 min to ensure sufficient re-dissolved.

Stability & Storage




This product is stable after storage at:

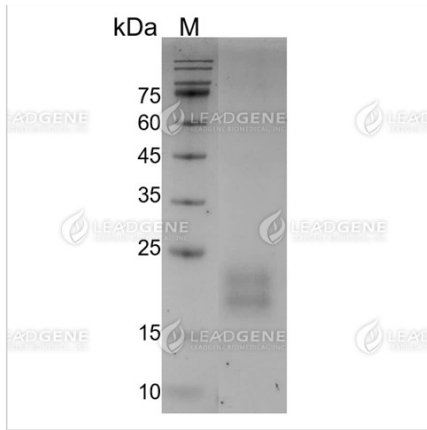
- -20°C for 12 months in lyophilized state from date of receipt.
- -20°C or -80°C for 1 month under sterile conditions after reconstitution.

Avoid repeated freeze/thaw cycles.

Shipping

The product is shipped with polar packs. Upon receipt, store it immediately at -20°C or lower for long term storage.

Image**Tainan Headquarter** +886-6-2536677 bd@leadgene.com.tw**Innovation & Research Center** +886-2-27065528**CLD Center** +886-6-2536677



SDS-PAGE analysis of recombinant
Canine CTLA-4 Protein.

Disclaimer : For Research Use or Further Manufacturing Only.