

Anti-ST2L Antibody [Clone 9G15]

Catalog Number LDG0046YA

Package 100 µg / Customized package

For full product information, images and publications, please visit [our website](#).



Overview

Description

The growth stimulation expressed gene 2 (ST2, also known as Interleukin 1 receptor-like 1, IL1RL1), a member of the IL-1 receptor family, has at least three isoforms. ST2L, a main isoform of ST2 proteins, is a transmembrane receptor that is expressed on various inflammatory cells, including T helper 2 (Th2) cells, mast cells, basophils and eosinophils. ST2L is a receptor of Interleukin-33 (IL-33), this ligand-receptor pair plays important role in the regulation of Th2 cell responses and is involved in various inflammatory pathologies.

Product Note

Recommended dilution factor:

ELISA: 1:5000-20000

WB: 1:1000-10000

IFA: 1:400-1000

FACS: Assay dependent

Note: Working dilution for specific application should be determined by the investigator to obtain the best conditions.

Specifications

Host

Mouse

Clonality

Monoclonal

Isotype

IgG1

Clone Name

clone 9G15

Tainan Headquarter

+886-6-2536677 +886-6-2531536

info@leadgene.com.tw

Taipei Office

+886-2-27065528

Immunogen

ST2L

Application

ELISA, WB, IFA, FACS

Concentration

1 mg/mL

Specificity

ST2L

Reactivity

Human

Conjugation

Unconjugated

Buffer

Phosphate Buffered Saline containing 0.03% ProClin 300, pH 7.4.

Form

Liquid

Instruction**Shipping**

The product is shipped with polar packs. Upon receipt, store it immediately at -20°C or lower for long term storage.

Stability & Storage


This product is stable after storage at:

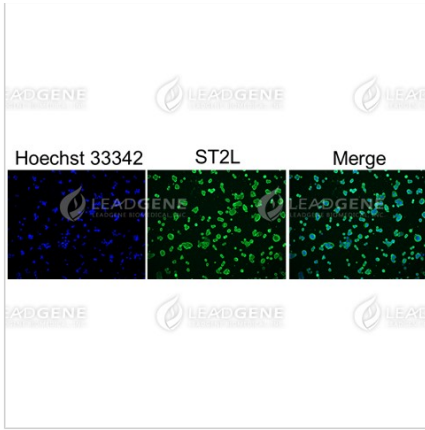
- 2-8°C for 2 weeks under sterile conditions from date of receipt.
- -20°C or -80°C for 12 months under sterile conditions from date of receipt.

Avoid repeated freeze/thaw cycles.

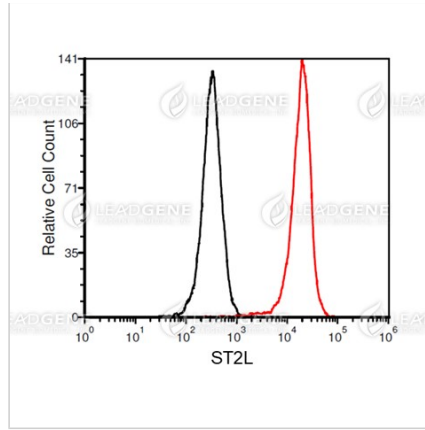
Suggestion: Divide antibody into several vials.

Keep only vials for usage at 2-8°C.

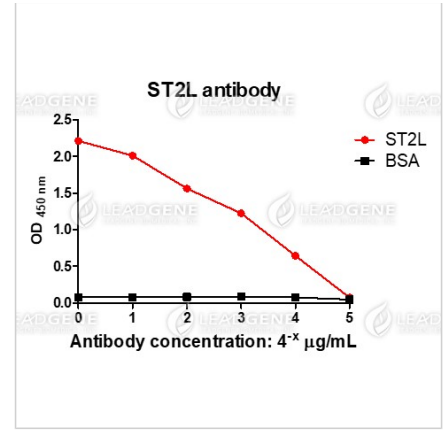
Image**Tainan Headquarter** +886-6-2536677  +886-6-2531536 info@leadgene.com.tw**Taipei Office** +886-2-27065528



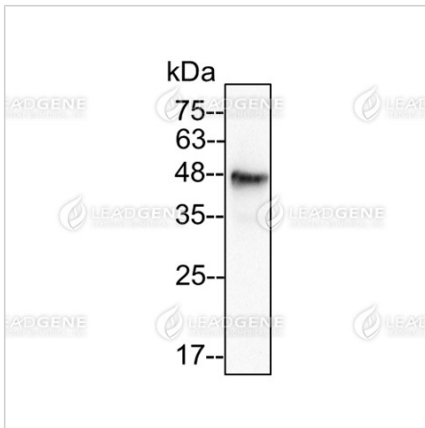
Immunofluorescence analysis of Anti-ST2L Antibody [Clone 9G15] HT29 cells were fixed in 4% PFA, permeabilized with PBS containing 0.1% Triton X-100. Cells were stained with mouse anti-ST2L monoclonal antibody (1:400) followed by secondary antibodies (goat anti-Mouse IgG-iFluor 488, 1:400, green) and cell nuclei were stained with Hoechst 33342 (Blue).



FACS analysis of Anti-ST2L Antibody [Clone 9G15] HT29 cells were stained with mouse anti-ST2L monoclonal antibody at 1 µg/ml (red) and without antibody control (black).



ELISA titration of Anti-ST2L Antibody [Clone 9G15] Titration curve of anti-ST2L antibody in ELISA. Red: ST2L; Black: BSA (negative control).



Western blotting analysis of Anti-ST2L Antibody [Clone 9G15] HT29 lysate (50 µg) was stained with mouse anti-IL-ST2L monoclonal antibody at 1:2000 dilution.

Disclaimer : For Research Use or Further Manufacturing Only.

Tainan Headquarter

☎ +886-6-2536677 📠 +886-6-2531536

✉ info@leadgene.com.tw

Taipei Office

☎ +886-2-27065528