

Anti-GIF Antibody [Clone 50-1]

Catalog Number	LDG0044YA
Package	100 µg / Customized package

For full product information, images and publications, please visit [our website](#).



Overview

Description

Metallothioneins (MTs) is a group of low-molecular-weight, cysteine-rich, non-enzymatic proteins, is involved in storage, transportation and binding of metals, and plays a critical role in the protection against metal toxicity and oxidative stress. Metallothionein-3 (MT-3 ; also known as Growth Inhibitory Factor, GIF), a member of the MTs family, is mainly expressed in the central nervous system, can protect neuronal cells from oxidative stress via its anti-oxidant properties. MT-3 is abnormally under-expressed in the brains of Alzheimer's disease patients.

Product Note

Recommended dilution factor:

ELISA: 1:5000-20000

WB: 1:1000-10000

IFA: 1:100-1000

FACS: Assay dependent

Note: Working dilution for specific application should be determined by the investigator to obtain the best conditions.

Specifications

Host	Clonality
Mouse	Monoclonal
Isotype	Clone Name
IgG1	clone 50-1
Immunogen	Reactivity
GIF	Human

Tainan Headquarter

+886-6-2536677

bd@leadgene.com.tw

Innovation & Research Center

+886-2-27065528

CLD Center

+886-6-2536677

Application

ELISA, WB, IFA, FACS

Concentration

1 mg/mL

Specificity

GIF

Conjugation

Unconjugated

Buffer

Phosphate Buffered Saline containing 0.03% ProClin 300, pH 7.4.

Form

Liquid

Instruction**Shipping**

The product is shipped with polar packs. Upon receipt, store it immediately at -20°C or lower for long term storage.



Stability & Storage

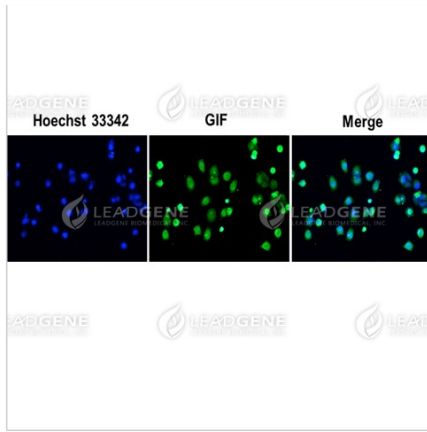
This product is stable after storage at:

- 2-8°C for 2 weeks under sterile conditions from date of receipt.
- -20°C or -80°C for 12 months under sterile conditions from date of receipt.

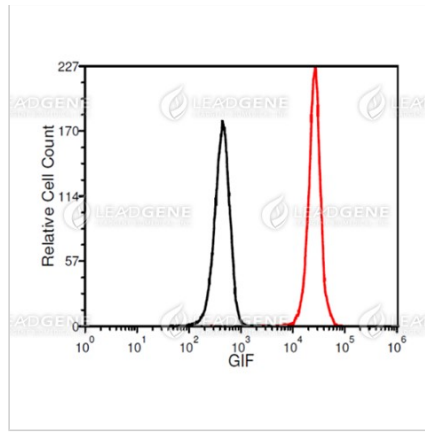
Avoid repeated freeze/thaw cycles.

Suggestion: Divide antibody into several vials. Keep only vials for usage at 2-8°C.

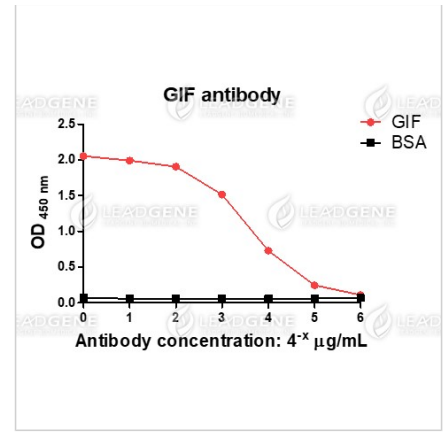
Image**Tainan Headquarter** +886-6-2536677 bd@leadgene.com.tw**Innovation & Research Center** +886-2-27065528**CLD Center** +886-6-2536677



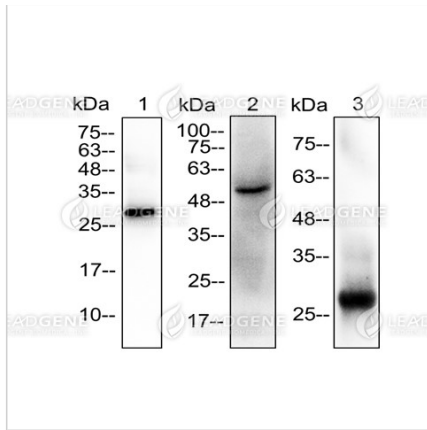
Immunofluorescence analysis of Anti-GIF Antibody [Clone 50-1]
 HeLa cells were fixed in 4% PFA, permeabilized with PBS containing 0.1% Triton X-100. Cells were stained with mouse anti-GIF monoclonal antibody (1:100) followed by secondary antibodies (goat anti-Mouse IgG-iFluor 488, 1:200, green) and cell nuclei were stained with Hoechst 33342 (Blue).



FACS analysis of Anti-GIF Antibody [Clone 50-1]
 K562 cells were stained with mouse anti-GIF monoclonal antibody at 2 μ g/ml (red) and without antibody control (black).



ELISA titration of Anti-GIF Antibody [Clone 50-1]
 Titration curve of anti-GIF antibody in ELISA. Red: GIF; Black: BSA (negative control).



Western blotting analysis of Anti-GIF

Antibody [Clone 50-1]

Recombinant proteins and mouse stomach lysates were stained with mouse

anti-GIF monoclonal antibody at

1:5000 dilution. Lane 1: Recombinant GIF

protein (100 ng). Lane 2: Mouse

stomach lysate (30 µg). Lane 3:

Human

gastric juice (10 µL).

Disclaimer : For Research Use or Further Manufacturing Only.