

## Anti-CXCL12 Antibody [Clone 69-2]

**Catalog Number** LDG0041YA

**Package** 100 µg / Customized package

For full product information, images and publications, please visit [our website](#).



### Overview

#### Description

The CXC chemokine is a group of secreted proteins, attracts neutrophils and lymphocytes. CXC chemokine ligand 12 (CXCL12 or Stromal cell-derived factor 1, SDF-1), a member of the CXC chemokines, exists in three alternative splicing variants ( $\alpha$ ,  $\beta$  and  $\gamma$ ). This chemokine plays a crucial role in embryogenesis, hematopoiesis, angiogenesis and inflammation. CXCL12 is the only chemokine ligand for CXCR4, this ligand-receptor pair is essential during embryogenesis, hematopoiesis, and immune system organization.

#### Product Note

Recommended dilution factor:

ELISA: 1:5000-20000

WB: 1:1000-10000

IFA: 1:200-1000

FACS: Assay dependent

Note: Working dilution for specific application should be determined by the investigator to obtain the best conditions.

### Specifications

#### Host

Mouse

#### Clonality

Monoclonal

#### Isotype

IgG2a

#### Clone Name

clone 69-2

#### Tainan Headquarter

+886-6-2536677 +886-6-2531536

info@leadgene.com.tw

#### Taipei Office

+886-2-27065528

**Immunogen**

CXCL12

**Application**

ELISA, WB, IFA, FACS

**Concentration**

1 mg/mL

**Specificity**

CXCL12

**Reactivity**

Human

**Conjugation**

Unconjugated

**Buffer**Phosphate Buffered Saline containing 0.03%  
ProClin 300, pH 7.4.**Form**

Liquid

**Instruction****Shipping**

The product is shipped with polar packs. Upon receipt, store it immediately at -20°C or lower for long term storage.

**Stability & Storage**



This product is stable after storage at:

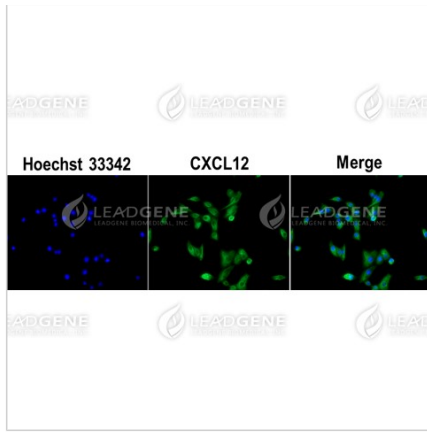
- 2-8°C for 2 weeks under sterile conditions from date of receipt.
- -20°C or -80°C for 12 months under sterile conditions from date of receipt.

Avoid repeated freeze/thaw cycles.

Suggestion: Divide antibody into several vials.

Keep only vials for usage at 2-8°C.

**Image****Tainan Headquarter** +886-6-2536677  +886-6-2531536 [info@leadgene.com.tw](mailto:info@leadgene.com.tw)**Taipei Office** +886-2-27065528

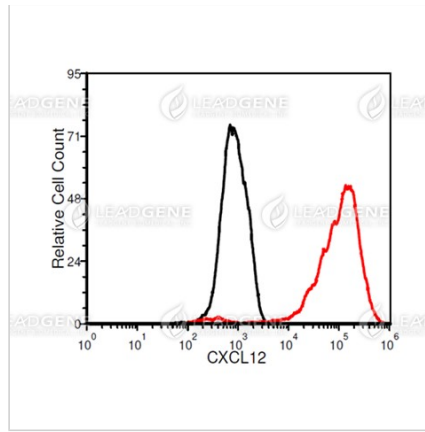


Immunofluorescence analysis of Anti-CXCL12 Antibody [Clone 69-2]

A549 cells were fixed in 4% PFA, permeabilized with PBS containing 0.1% Triton X-100. Cells were stained with mouse anti-CXCL12 monoclonal

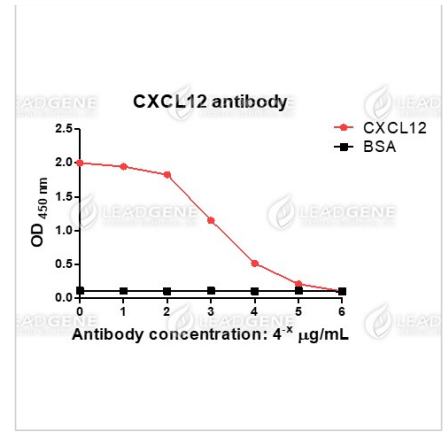
antibody (1:200) followed by secondary antibodies (goat anti-Mouse IgG-iFluor 488, 1:400, green) and cell nuclei were stained with Hoechst 33342

(Blue).



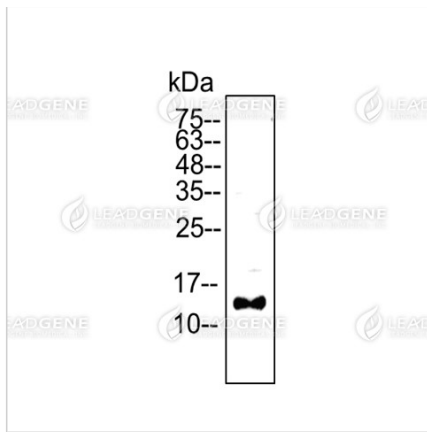
FACS analysis of Anti-CXCL12 Antibody [Clone 69-2]

A549 cells were stained with mouse anti-CXCL12 monoclonal antibody at 2 µg/ml (red) and without antibody control (black).



ELISA titration of Anti-CXCL12 Antibody [Clone 69-2]

Titration curve of anti-CXCL12 antibody in ELISA. Red: CXCL12; Black: BSA (negative control).



Western blotting analysis of Anti-CXCL12 Antibody [Clone 69-2]  
 HeLa cell lysates (30  $\mu$ g) were stained with mouse anti-CXCL12 monoclonal antibody at 1:5000 dilution.

**Disclaimer :** For Research Use or Further Manufacturing Only.

#### Tainan Headquarter

+886-6-2536677 +886-6-2531536

info@leadgene.com.tw

#### Taipei Office

+886-2-27065528