

## HCoV-NL63 Nucleocapsid Protein, His-SUMO Tag, HEK293

Catalog Number	LDG003PVM
Package	5 µg / 20 µg / 100 µg / Customized package

For full product information, images and publications, please visit [our website](#).



### Specifications

#### Species of Origin

Human coronavirus NL63

#### Affinity Tag

His-SUMO Tag (N-term)

#### Purity

>90% as determined by SDS-PAGE analysis.

#### Form

Lyophilized

#### Expression system

HEK293

#### Buffer

Lyophilized from a 0.2 µm filtered solution of PBS, pH 7.4.

#### Molecular weight

The protein has a calculated MW of 53.79 kDa.  
The protein migrates about 70-75 kDa under reducing condition (SDS-PAGE analysis).

### Background

#### Tainan Headquarter

+886-6-2536677

bd@leadgene.com.tw

#### Innovation & Research Center

+886-2-27065528

#### CLD Center

+886-6-2536677

### Background

There are seven human coronaviruses have been identified. The common human coronaviruses are four groups, known as 229E ( $\alpha$  coronavirus), NL63 ( $\alpha$  coronavirus), OC43 ( $\beta$  coronavirus) and HKU1 ( $\beta$  coronavirus). Because the crown-like spikes on the surface of virus, they are named for coronaviruses. HCoV cause the respiratory tract diseases, especially severe in infants and the elderly. The spike protein controled the infection of target cells and it facilitated entry into cells by binding cellular receptors.

### Uniprot ID

#Q6Q1R8

### Synonyms

Nucleoprotein, N, Nucleocapsid protein, NC Protein N

### Sequence Note

Met1-His377

## Instruction

### Reconstitution

It is recommended to reconstitute the lyophilized protein in sterile H<sub>2</sub>O to a concentration of 200  $\mu$ g/mL and incubate the stock solution for at least 20 min to ensure sufficient re-dissolved.

### Stability & Storage

This product is stable after storage at:

- -20°C for 12 months in lyophilized state from date of receipt.
- -20°C or -80°C for 1 month under sterile conditions after reconstitution.

Avoid repeated freeze/thaw cycles.

### Shipping

The product is shipped with polar packs. Upon receipt, store it immediately at -20°C or lower for long term storage.

## Image

### Tainan Headquarter

+886-6-2536677

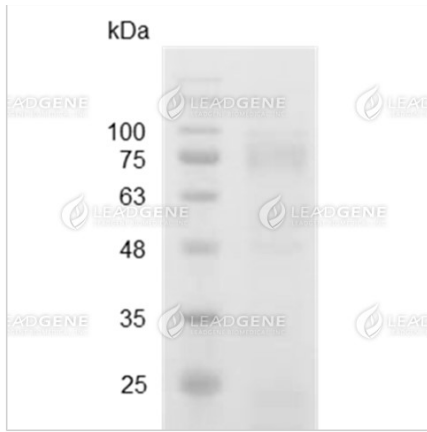
bd@leadgene.com.tw

### Innovation & Research Center

+886-2-27065528

### CLD Center

+886-6-2536677



SDS-PAGE analysis of Human  
Coronavirus (NL63) nucleocapsid  
protein

**Disclaimer :** For Research Use or Further Manufacturing Only.