

## DENV NS1 Protein, His Tag, E. coli

**Catalog Number** LDG003PVE

**Package** 5 µg / 20 µg / 100 µg / 1 mg / Customized package

For full product information, images and publications, please visit [our website](#).



### Specifications

#### Species of Origin

Dengue virus

#### Affinity Tag

His Tag (C-term)

#### Expression system

Escherichia coli

#### Buffer

Lyophilized from a 0.2 µm filtered solution of PBS, pH 8.0.

#### Purity

>98% as determined by SDS-PAGE analysis.

#### Molecular weight

The protein has a calculated MW of 40.88 kDa.  
The protein migrates as 25-35 kDa under reducing condition (SDS-PAGE analysis).

#### Form

Lyophilized

### Background

#### Tainan Headquarter

+886-6-2536677

bd@leadgene.com.tw

#### Innovation & Research Center

+886-2-27065528

#### CLD Center

+886-6-2536677

### Background

Dengue virus (DENV) is common mosquito-borne infection and a major cause of morbidity in tropical and subtropical regions. DENV NS1 protein containing 353 amino acids with polyhistidine tag at the C-terminus. DENV NS1 protein plays an important role in viral replication and viability. And DENV NS1 has been shown to co-localize with dsRNA and other components of viral replication complexes in viral-induced vesicle packets.

### Uniprot ID

#P29990

### Synonyms

Genome polyprotein

### Sequence Note

Asp776-Ala1127

## Instruction

### Reconstitution

It is recommended to reconstitute the lyophilized protein in sterile H<sub>2</sub>O to a concentration of 200 µg/mL and incubate the stock solution for at least 20 min to ensure sufficient re-dissolved.

### Stability & Storage

This product is stable after storage at:

- -20°C for 12 months in lyophilized state from date of receipt.
- -20°C or -80°C for 1 month under sterile conditions after reconstitution.

Avoid repeated freeze/thaw cycles.

### Shipping

The product is shipped with polar packs. Upon receipt, store it immediately at -20°C or lower for long term storage.

## Image

### Tainan Headquarter

+886-6-2536677

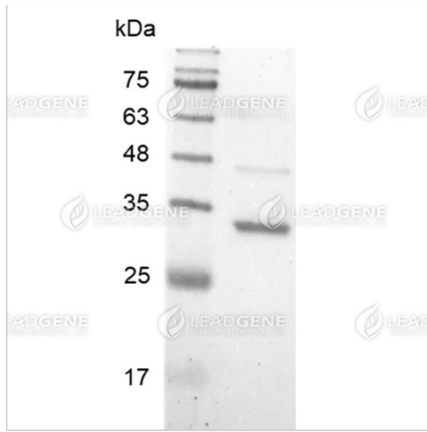
bd@leadgene.com.tw

### Innovation & Research Center

+886-2-27065528

### CLD Center

+886-6-2536677



SDS-PAGE analysis of recombinant  
DENV NS1 protein.

**Disclaimer :** For Research Use or Further Manufacturing Only.