

## Anti-IL-16 Antibody [Clone 72-15]

<b>Catalog Number</b>	LDG0032YA
<b>Package</b>	100 µg / 200 µg / Customized package

For full product information, images and publications, please visit [our website](#).



### Overview

#### Description

Interleukin-16 (IL-16) is a pro-inflammatory cytokine produced by varied immune and parenchymal cells, shows no sequence homology to any other known cytokine or chemokine. IL-16 is also known as a lymphocyte chemoattractant factor (LCF) that is chemotactic for CD4+ cells, monocytes and eosinophils, plays an important role in CD4+ cell recruitment and activation through interaction with CD4 and has been linked to inflammatory diseases such as asthma.

#### Product Note

Recommended dilution factor:

ELISA: 1:5000-20000

WB: 1:1000-5000

IFA: 1:500-1000

FACS: Assay dependent

Note: Working dilution for specific application should be determined by the investigator to obtain the best conditions.

### Specifications

#### Host

Mouse

#### Clonality

Monoclonal

#### Isotype

IgG1

#### Clone Name

clone 72-15

#### Immunogen

Interleukin 16

#### Reactivity

Human, Mouse

#### Tainan Headquarter

+886-6-2536677

bd@leadgene.com.tw

#### Innovation & Research Center

+886-2-27065528

#### CLD Center

+886-6-2536677

**Application**

ELISA, WB, IFA, FACS

**Conjugation**

Unconjugated

**Concentration**

1 mg/mL

**Buffer**

Phosphate Buffered Saline containing 0.03% ProClin 300, pH 7.4.

**Specificity**

Interleukin 16

**Form**

Liquid

**Instruction****Shipping**

The product is shipped with polar packs. Upon receipt, store it immediately at -20°C or lower for long term storage.




**Stability & Storage**

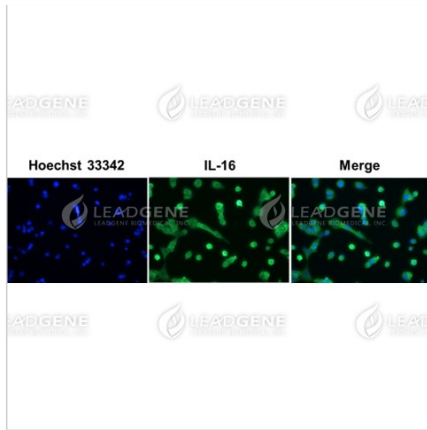
This product is stable after storage at:

- 2-8°C for 2 weeks under sterile conditions from date of receipt.
- -20°C or -80°C for 12 months under sterile conditions from date of receipt.

Avoid repeated freeze/thaw cycles.

Suggestion: Divide antibody into several vials. Keep only vials for usage at 2-8°C.

**Image****Tainan Headquarter** +886-6-2536677 [bd@leadgene.com.tw](mailto:bd@leadgene.com.tw)**Innovation & Research Center** +886-2-27065528**CLD Center** +886-6-2536677



#### Immunofluorescence analysis of Anti-IL-16 Antibody [Clone 72-15]

A549 cells were fixed in 4% PFA, permeabilized with PBS containing 0.1%

Triton X-100. Cells were stained with mouse anti-IL-16 monoclonal antibody (1:100) followed by secondary antibodies (goat anti-Mouse IgG-iFluor 488,

1:200, green) and cell nuclei were stained with Hoechst 33342 (Blue).

**Disclaimer :** For Research Use or Further Manufacturing Only.