

## Anti-IL-8 Antibody [Clone 58-1]

Catalog Number	LDG0030YA
Package	100 µg / Customized package

For full product information, images and publications, please visit [our website](#).



### Overview

#### Description

The CXC chemokine is a group of secreted proteins, attracts neutrophils and lymphocytes. Interleukin-8 (IL-8, or CXCL8), a member of the CXC chemokines, is a proinflammatory cytokine produced by macrophages and other cell types like endothelial cells, epithelial cells and airways smooth muscle cells. This cytokine mainly attracts and activates neutrophils to the site of inflammation and also plays an important role in cell proliferation, tissue remodeling and angiogenesis.

#### Product Note

Recommended dilution factor:

ELISA: 1:5000-20000

WB: 1:1000-5000

IFA: 1:500-1000

FACS: Assay dependent

Note: Working dilution for specific application should be determined by the investigator to obtain the best conditions.

### Specifications

<b>Host</b>	<b>Clonality</b>
Mouse	Monoclonal
<b>Isotype</b>	<b>Clone Name</b>
IgG1	clone 58-1
<b>Immunogen</b>	<b>Reactivity</b>
Interleukin 8	Human

#### Tainan Headquarter

+886-6-2536677

bd@leadgene.com.tw

#### Innovation & Research Center

+886-2-27065528

#### CLD Center

+886-6-2536677

**Application**

ELISA, WB, IFA, FACS

**Conjugation**

Unconjugated

**Concentration**

1 mg/mL

**Buffer**

Phosphate Buffered Saline containing 0.03% ProClin 300, pH 7.4.

**Specificity**

Interleukin 8

**Form**

Liquid

**Instruction****Shipping**

The product is shipped with polar packs. Upon receipt, store it immediately at -20°C or lower for long term storage.

**Stability & Storage**

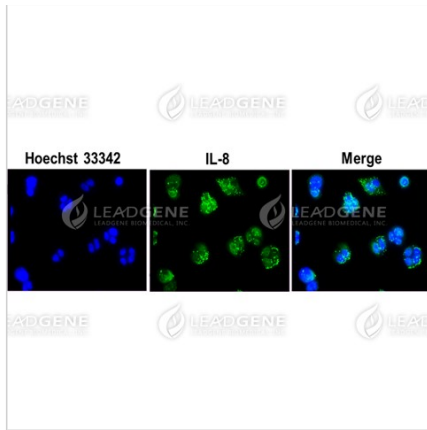
This product is stable after storage at:

- 2-8°C for 2 weeks under sterile conditions from date of receipt.
- -20°C or -80°C for 12 months under sterile conditions from date of receipt.

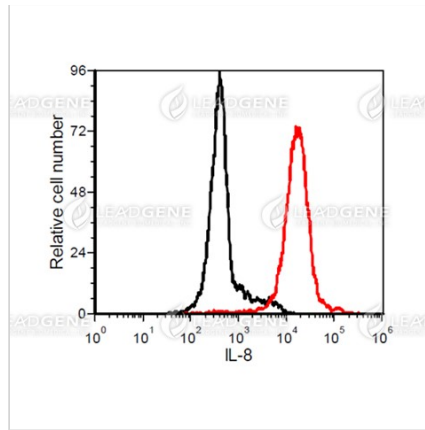
Avoid repeated freeze/thaw cycles.

Suggestion: Divide antibody into several vials. Keep only vials for usage at 2-8°C.

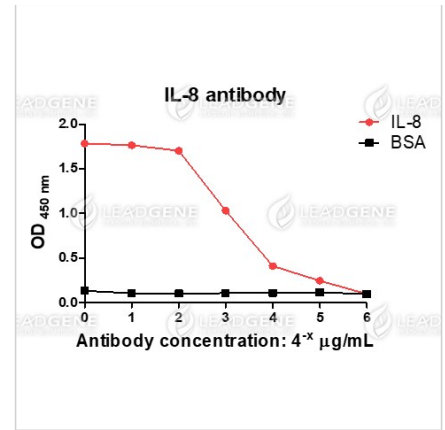
**Image****Tainan Headquarter** +886-6-2536677 [bd@leadgene.com.tw](mailto:bd@leadgene.com.tw)**Innovation & Research Center** +886-2-27065528**CLD Center** +886-6-2536677



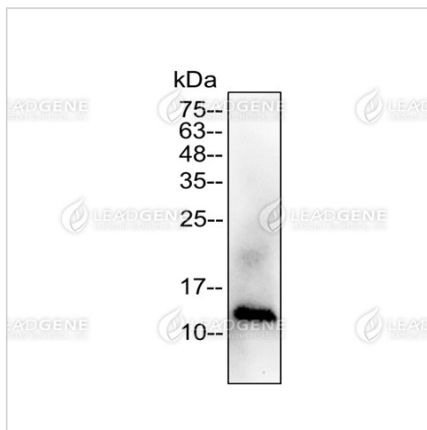
**Immunofluorescence analysis of Anti-IL-8 Antibody [Clone 58-1]**  
 HeLa cells were fixed in 4% PFA, permeabilized with PBS containing 0.1% Triton X-100. Cells were stained with mouse anti-IL-8 monoclonal antibody (1:200) followed by secondary antibodies (goat anti-Mouse IgG-iFluor 488, 1:400, green) and cell nuclei were stained with Hoechst 33342 (Blue).



**FACS analysis of Anti-IL-8 Antibody [Clone 58-1]**  
 Human peripheral blood mononuclear cells (PBMC) were stained with mouse anti-IL-8 monoclonal antibody at 2 µg/ml (red) and without antibody control (black).



**ELISA titration of Anti-IL-8 Antibody [Clone 58-1]**  
 Titration curve of anti-IL-8 antibody in ELISA. Red: IL-8; Black: BSA (negative control).



**Western blotting analysis of Anti-IL-8 Antibody [Clone 58-1]**  
 Recombinant IL-8 protein (100 ng) was stained with mouse anti-IL-8 monoclonal antibody at 1:5000 dilution.

**Disclaimer :** For Research Use or Further Manufacturing Only.

**Tainan Headquarter**

+886-6-2536677

bd@leadgene.com.tw

**Innovation & Research Center**

+886-2-27065528

**CLD Center**

+886-6-2536677