

## SARS-CoV-2 Virus-Like Particles

<b>Catalog Number</b>	LDG002PVM
<b>Package</b>	100 µg / Customized package

For full product information, images and publications, please visit [our website](#).



### Specifications

#### Species of Origin

SARS-CoV-2

#### Expression system

HEK293

#### Concentration

1 mg/mL

#### Buffer

Liquid. Phosphate buffered saline, pH 7.4.

#### Molecular weight

Purified SARS-CoV-2 VLPs was analyzed migrates about 180 kDa under reducing condition, using Mouse anti-SARS-CoV-2 Spike mAb, clone LGSV201. (Western blot)

Purified SARS-CoV-2 VLPs was analyzed migrates as 46-63 kDa under reducing condition, using Anti-SARS-CoV-2 NP polyclonal antibody. (Western blot)

#### Form

Liquid

### Background

#### Background

SARS-CoV-2 virus-like particles are composed of four structural proteins: Membrane protein (M), Nucleocapsid protein (N), Spike protein (S) and Envelope protein (E). VLPs are produced in mammalian HEK293 cells.

### Instruction

#### Tainan Headquarter

+886-6-2536677

bd@leadgene.com.tw

#### Innovation & Research Center

+886-2-27065528

#### CLD Center

+886-6-2536677

## Shipping

The product is shipped with polar packs. Upon receipt, store it immediately at -80°C or lower for long term storage.

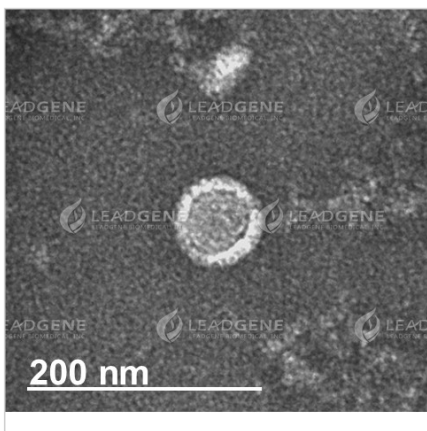
## Stability & Storage

This product is stable after storage at:

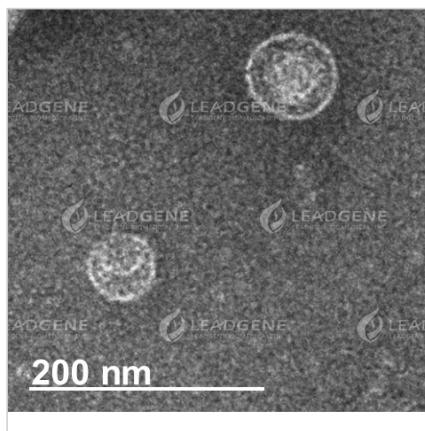
- -80°C for long-term storage under sterile conditions.

Avoid repeated free-thaw cycles. Thaw quickly using a 37°C water bath immediately before use.

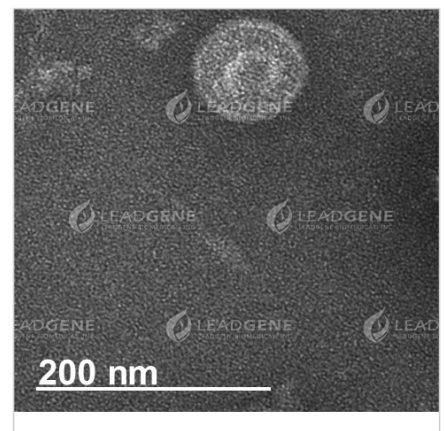
## Image



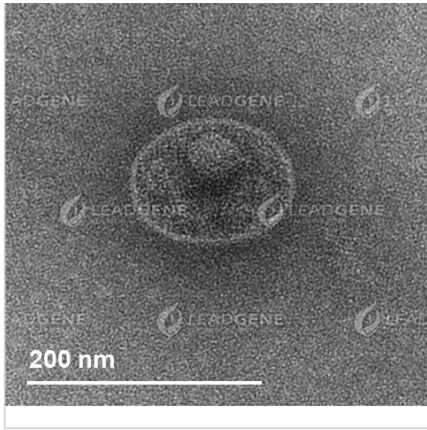
Representative TEM images of SARS-CoV-2 Virus-Like Particles  
The VLP size and morphology were assessed by negatively stained transmission electron microscopy (TEM). The scale bar is 200 nm.



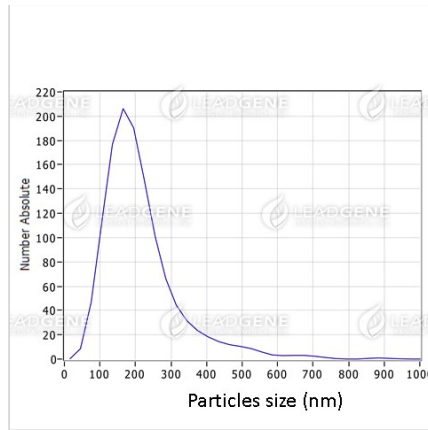
Representative TEM images of SARS-CoV-2 Virus-Like Particles  
The VLP size and morphology were assessed by negatively stained transmission electron microscopy (TEM). The scale bar is 200 nm.



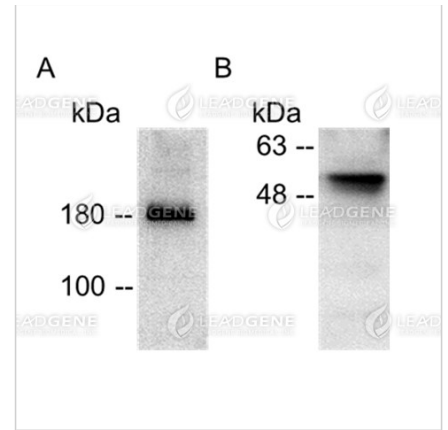
Representative TEM images of SARS-CoV-2 Virus-Like Particles  
The VLP size and morphology were assessed by negatively stained transmission electron microscopy (TEM). The scale bar is 200 nm.



Representative TEM images of SARS-CoV-2 Virus-Like Particles  
 The VLP size and morphology were assessed by negatively stained transmission electron microscopy (TEM). The scale bar is 200 nm.



Nanoparticle tracking analysis of SARS-CoV-2 Virus-Like Particles  
 The nanoparticle tracking analysis (NTA) data revealed particle size distribution, and average concentrations was 1.0E+10 particles / mL



Purified SARS-CoV-2 VLPs were analyzed by Western blot using (A) Mouse anti-SARS-CoV-2 Spike mAb, clone LGSV201 (Cat. 18100) and (B) Anti-SARS-CoV-2 NP polyclonal antibody.

**Disclaimer :** For Research Use or Further Manufacturing Only.