

Anti-IL-2 Antibody [Clone 62-2]

| | |
|-----------------------|-----------------------------|
| Catalog Number | LDG0022YA |
| Package | 100 µg / Customized package |

For full product information, images and publications, please visit [our website](#).



Overview

Description

The gamma-chain (γ-chain) cytokines regulate the development, survival, proliferation, differentiation and function of cells of the immune system. Interleukin-2 (IL-2), a member of the γ-chain cytokines, is a cytokine produced by helper T cells. This cytokine has immunostimulatory and immunoregulatory functions and plays an important role in induction of immunity through proliferation and activation of T cells, stimulation of NK cells, and homeostasis.

Product Note

Recommended dilution factor:

ELISA: 1:5000-20000

WB: 1:1000-5000

IFA: 1:400-1000

FACS: Assay dependent

Note: Working dilution for specific application should be determined by the investigator to obtain the best conditions.

Specifications

| | |
|------------------|-------------------|
| Host | Clonality |
| Mouse | Monoclonal |
| Isotype | Clone Name |
| IgG1 | clone 62-2 |
| Immunogen | Reactivity |
| Interleukin 2 | Human |

Tainan Headquarter

+886-6-2536677

bd@leadgene.com.tw

Innovation & Research Center

+886-2-27065528

CLD Center

+886-6-2536677

Application

ELISA, WB, IFA, FACS

Conjugation

Unconjugated

Concentration

1 mg/mL

Buffer

Phosphate Buffered Saline containing 0.03% ProClin 300, pH 7.4.

Specificity

Interleukin 2

Form

Liquid

Instruction**Shipping**

The product is shipped with polar packs. Upon receipt, store it immediately at -20°C or lower for long term storage.

Stability & Storage

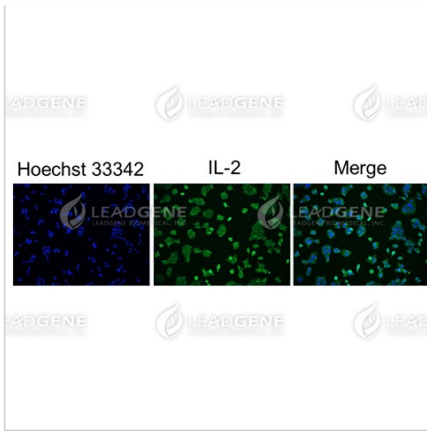
This product is stable after storage at:

- 2-8°C for 2 weeks under sterile conditions from date of receipt.
- -20°C or -80°C for 12 months under sterile conditions from date of receipt.

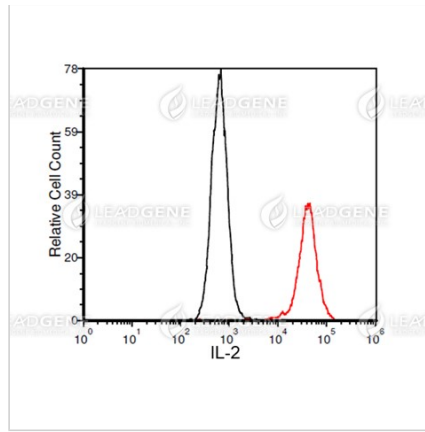
Avoid repeated freeze/thaw cycles.

Suggestion: Divide antibody into several vials. Keep only vials for usage at 2-8°C.

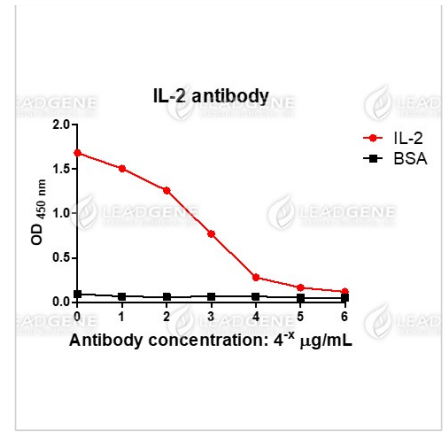
Image**Tainan Headquarter** +886-6-2536677 bd@leadgene.com.tw**Innovation & Research Center** +886-2-27065528**CLD Center** +886-6-2536677



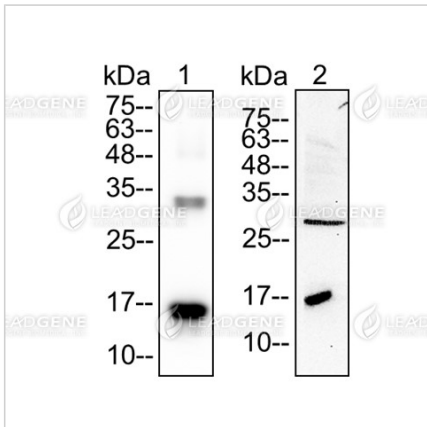
Immunofluorescence analysis of Anti-IL-2 Antibody [Clone 62-2]
MCF-7 cells were fixed in 4% PFA, permeabilized with PBS containing 0.1% Triton X-100. Cells were stained with mouse anti-IL-2 monoclonal antibody (1:400) followed by secondary antibodies (goat anti-Mouse IgG-iFluor 488, 1:400, green) and cell nuclei were stained with Hoechst 33342 (Blue).



FACS analysis of Anti-IL-2 Antibody [Clone 62-2]
MCF-7 cells were stained with mouse anti-IL-2 monoclonal antibody at 1 µg/ml (red) and without antibody control (black).





ELISA titration of Anti-IL-2 Antibody [Clone 62-2]
Titration curve of anti-IL-2 antibody in ELISA. Red: IL-2; Black: BSA (negative control).



Western blotting analysis of Anti-IL-2 Antibody [Clone 62-2]
Recombinant proteins and MCF-7 cell lysates were stained with mouse anti-IL-2 monoclonal antibody at 1:2000 dilution. Lane 1: recombinant IL-2 protein (100 ng). Lane 2: MCF-7 cell lysates (60 µg).

Disclaimer : For Research Use or Further Manufacturing Only.

Tainan Headquarter +886-6-2536677 bd@leadgene.com.tw**Innovation & Research Center** +886-2-27065528**CLD Center** +886-6-2536677